

NanoPure



COMPRESSION TUBE FITTINGS

經銷商
南宜國際材料有限公司

- 總公司 TEL: 03-560-1270
新竹縣竹北市台元科技園區台元一街8號6樓之1
- 台中 TEL: 03-560-1270 ■ 台南 TEL: 06-599-2080
- ✉ service@cemabearing.com
- 🌐 www.sinmat.com.tw

昆山南宜喜瑪商貿有限公司

- TEL: 86-512-5527-6656
- ✉ service@cemabearing.com.cn
- 🌐 www.cematechnology.com





"NanoPure" is a brand of Gas Delivery Total Solution, belongs to King Lai Group, who was founded 1991 in Taiwan and expanded production facility in Kunshan, Jiangsu Province, China. Supplying tubing/piping and fitting materials service for Semiconductor, FPD, LED and Photovoltaic industries, the core idea of **"NanoPure"** is providing "High purity materials" with high quality components for gas delivery applications.

Gas supply and delivery is always the topic to study in Semiconductor processing. To ensure the accuracy of the processing, the purity of gas sources is the vital factors. Keeping the purity while the gas has been transferred into processing tools is highly monitored by process engineers.

"NanoPure" is composed of people who are specialist in stainless steels fabrication. By making sure the selection of finest materials, we provide finest products. The key point is how to control the quality of

Introduction



materials which makes big difference of welding quality while installing or welding assembly. There will be the potential impurity or inclusion in welding process. Therefore, electropolish is the solvable process for increasing reliability of stainless steel to against corrosion gases.

"NanoPure" aims to provide the highest quality products, so the quality control and uniformity are essential points to promise customers. In the meantime, we do put emphasis on the details of products such as dimension and tolerance which are important for

quality control and therefore remain the high yield rate for assembly. Operational packages can be followed according to the customer's instruction, the ranging from normal standard clean package to Ultra High Purity clean room package.

"NanoPure" In addition to UHP products, we also provide various products needed by various Industries, such as Oil & Gas Industries, Process Instrumentation, Power Generation, Pulp & Paper, Chemical, Analytical Instrumentation, Hydrogen Fuel Cells and Natural Gas

"NanoPure" considers every single key processing during the fabrication.

Our goal is keeping **continually improvement to reach customers' satisfaction!**

Introduction

NanoPure tube fittings are designed as leak-free connections for process, power and instrumentation applications.

The two ferrule fittings are manufactured to the highest quality standards and are available in a broad range of sizes, materials and configurations.

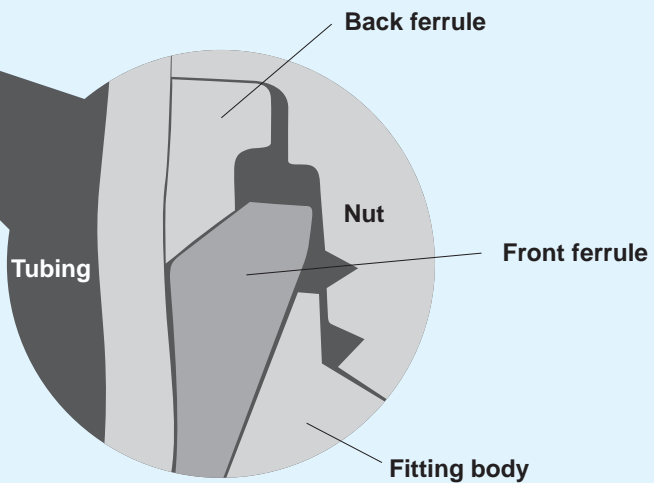
Features

The NanoPure tube fitting has been specifically designed for use on instrumentation, process and control systems, analyzers and environmental equipment employed in chemical, petroleum, power generating and pulp and paper plants.

The NanoPure tube fitting has also found extensive application in other fields where a high quality tube fitting is required.

Materials

NanoPure fittings are available as standard, 316 stainless steel. Other standard materials include steel, brass, aluminum, nickel-copper, Hastelloy C®, Alloy 600, Titanium, 6Mo, Incoloy 625 and 825.



During assembly of the advanced-geometry design (above), the front ferrule is driven into the fitting body and the tubing to create primary seals, while the back ferrule hinges inward to create a strong grip on the tubing. The back ferrule geometry allows for an improved engineering hinging-colleting action that translates axial motion into radial swaging action on the tube, yet operates with a low assembly torque requirement.

Instrument & meter



Petroleum, chemical industry



Independent control system



Power generation



Papermaking

Straight fittings are machined from cold finished bar stock and shaped bodies are machined from close grain forgings.

Torque

NanoPure tube fittings do not twist the tubing during installation.

NanoPure ferrule designs assure that all make and remake motion is transmitted axially to the tubing.

Since no radial movement of the tubing occurs, the tubing is not stressed.

The mechanical integrity of the tubing is maintained.

Installation

Assembly Instructions

NanoPure tube fittings can be installed by using readily available wrenches



Step 1

Insert tubing into NanoPure fitting until the tubing sits on the shoulder of the body. Make sure the nut is finger-tight.



Step 2

Form the finger-tight position; rotate the nut $3/4$ for sizes between $1/16$ " and $3/16$ ".



Step 3

Rotate $1-1/4$ turn for the sizes between $1/4$ " and 1 " tubing

NanoPure tube fittings can be used with a wide variety of tubing materials and a broad range of tube wall thicknesses.

This assures that the nut will back-off freely for disassembly and permits a greater number of easy remakes.

Sealing

Positive, reliable connections with NanoPure fittings have been qualified by exhaustive tests and over four decades of experience in the manufacture of quality tube fittings.

Tube OD Tolerances

Size (inch)	Tolerances (inch)	Size (mm)	Tolerances (mm)
1/16 - 1/8	±0.003	2 - 3	±0.076
3/16 - 1 1/4	±0.005	4 - 25	±0.127
1 1/2 - 2	±0.006	38 - 50	±0.152

TABLE 1: STAINLESS STEEL INCH TUBING

Annealed 304 or 316 stainless steel tubing complying with ASTM A213, A269 or equivalent specifications. For metal temp. From -20° F - 100° F (-29° C - 37° C).

ASTM A269 or A213 or equivalent, seamless or welded and drawn with a hardness of 90HRB (200HV) or less. Tubing should be without scratches and suitable for flaring and bending.

Tube (OD) (inches)	TUBE WALL THICKNESS (inches)												
	0.010	0.012	0.014	0.016	0.020	0.028	0.035	0.049	0.065	0.083	0.095	0.109	0.120
1/16	5600	6800	8100	9400	12000								
1/8						8000	10900						
3/16						5400	7000	10200					
1/4						4000	5100	7500	10200				
5/16							4000	5800	8000				
3/8							3300	4800	6500				
1/2							2400	3500	4700	6200			
5/8								2900	4000	5200	6000		
3/4								2400	3300	4200	4900	5800	
7/8								2000	2800	3600	4200	4800	
1									2400	3100	3600	4200	4700

TABLE 2: STAINLESS STEEL METRIC TUBING

Annealed 304 or 316 stainless steel tubing complying with ASTM A213, A269 or equivalent specifications. For metal temp. From -20° F - 100° F (-29° C - 37° C).

ASTM A269 or A213 or equivalent, seamless or welded and drawn with a hardness of 90HRB (200HV) or less. Tubing should be without scratches and suitable for flaring and bending.

Tube (OD) (mm)	TUBE WALL THICKNESS (inches)													
	0.8	1.0	1.2	1.5	1.8	2.0	2.2	2.5	2.8	3.0	3.5	4.0	4.5	5.0
3	670													
6	310	420	540	710										
8		310	390	520										
10		240	300	400	510	580								
12		200	250	330	410	470								
14		160	200	270	340	380	430							
15		150	190	250	310	360	400							
16		170	230	290	330	370	400							
18		150	200	260	290	320	370							
20		140	180	230	260	290	330	380						
22		120	160	200	230	260	300	340						
25				180	200	230	260	290	320					

TABLE 3: COPPER TUBING WALL THICKNESS OF TUBE IN INCHES

Tubing O.D	TUBE WALL THICKNESS (inches)									
	mm	inch	0.028	0.035	0.049	0.065	0.083	0.095	0.109	0.120
2	1/8	2700	3600							
3	3/16	1800	23 00	3400						
6	1/4	1300	1600	2500	3500					
8	5/16		1300	1900	2700					
10	3/8		1000	1600	2200					
12	1/2		800	1100	1600	2100				
16	5/8			900	1200	1600	1900			
20	3/4			700	1000	1300	1500	1800		
22	7/8			600	800	1100	1300	1500		
25	1			500	700	900	1100	1300	1500	

TABLE 4: FACTORS USED TO DETERMINE ALLOWABLE PRESSURE AT HIGHER TEMPERATURES

Example: the allowable pressure for Type 316 stainless steel size 1/2" OD × .049" wall at 800°F(427°C) would be equivalent to 3750 psi × 0.79 = 2962.5ps

° F	° C	SS 316	Copper
200	93	1	0.80
400	204	0.96	0.50
600	316	0.85	
800	427	0.79	
1000	538	0.76	
1200	649	0.37	

TABLE 5: GAS APPLICATION TUBING

Gases are characterized by small molecules, which can escape through the smallest leak path. For gas applications we recommend to select tubing with greater wall thickness. Table 5 shows the recommended wall thicknesses for greater safety and efficiency.

INCH		METRIC (mm)	
Tubing O.D.	Min Nominal Wall Thickness	Tubing O.D.	Min Nominal Wall Thickness
1/8	0.028	3	0.8
3/16	0.028	6	0.8
1/4	0.028	8	1.0
5/16	0.035	10	1.0
3/8	0.035	12	1.0
1/2	0.049	14	1.2
5/8	0.065	16	1.5
3/4	0.065	18	1.5
7/8	0.083	20	1.8
1	0.083	22	2.0
1 1/4	0.095	25	2.2
1 1/2	0.120	38	3.0
2	0.156	50	4.5

TABLE 6: PRESSURE RATINGS

Allowable pressure for male and female tapered pipe thread ends, Stainless Steel 316 and Brass.

NPT / ISO Pipe Size	SS 316		Brass	
	Male	Female	Male	Female
1/16	11000	6700	5500	3300
1/8	10000	6500	5000	3200
1/4	8000	6600	4000	3300
3/8	7800	5300	3900	2600
1/2	7700	4900	3800	2400
3/4	7300	4600	3600	2300
1	5300	4400	2600	2200
1 1/4	6000	50000	3000	2500
1 1/2	5000	4600	2500	2300
2	3900	3900	1900	1900

TABLE 7: PRESSURE RATINGS

Allowable pressure for male and female tapered pipe thread ends, Stainless Steel 316 and Brass.

(LOB) SAE J1926 Thread Size	SS 316	
	Non Positionable	Positionable
inch	psi	
5/16 - 24	4568	4568
7/16 - 20	4568	4568
1/2 - 20	4568	4568
9/16 - 18	4568	3626
3/4 - 16	4568	3626
7/8 - 14	3626	2900
1 1/16 - 12	3626	2900
1 3/16 - 12	2900	2320
1 5/16 - 12	2900	2320
1 5/8 - 12	2320	1813
1 7/8 - 12	2320	1813
2 1/2 - 12	1813	1450

TABLE 8: PRESSURE RATINGS

(G) ISO / BSPP Male Pipe size	SS 316
inch	psi
1/8	4568
1/4	4568
3/8	4568
1/2	2320

TYPICAL RAW MATERIAL SPECIFICATIONS

Basic Fitting Material	Bar Stock	Forging	Common Tubing Specification
Stainless Steel	ASTM A479, ASTM A276, ASME SA479, JIS G4303	ASTM A182, 316, ASME SA182 F316, JIS G3214	ASTM A213
			ASME SA213
			ASTM A249
			ASTM A269
			MIL T8504
			MIL T8506
			JIS G3459

NanoPure Tube Fitting Visual Index



Male Connector
Page : 16



Male Branch Tee
Page : 28



Conversion Union
Metric Tube To
Inch Tube
Page : 37



BSP Taper Male
Connector
Page : 18



Female
Connector
Page : 30



Reducing Union
Page : 38



BSPP Male
Connector
Page : 20



Female Bulkhead
Connector
Page : 32



Bulkhead Union
Page : 40



Male Bulkhead
Connector
Page : 22



Female Elbow
Page : 33



Union Elbow
Page : 41



Thermocouple
Connector
Page : 24



Female Run Tee
Page : 34



Drop Size Elbows
Page : 42



Male Elbow
Page : 25



Female Branch
Tee
Page : 35



Union Tee
Page : 43










Male Run Tee
Page : 27

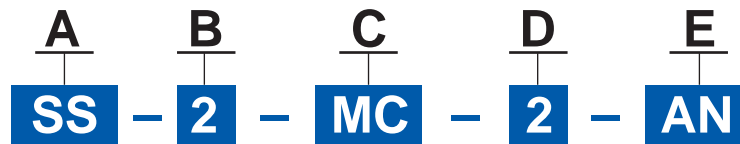


Union
Page : 36



R-Tee
Page : 44

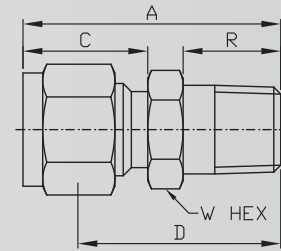
	<p>Union Cross</p> <p>Page : 46</p>		<p>37° Flare Connector</p> <p>Page : 56</p>		<p>Cap</p> <p>Page : 63</p>
	<p>Tube End Reducer</p> <p>Page : 47</p>		<p>37° Flare Bulkhead Connector</p> <p>Page : 57</p>		<p>45° Male Elbow</p> <p>Page : 64</p>
	<p>Tube End Bulkhead Adapter</p> <p>Page : 49</p>		<p>Nut</p> <p>Page : 58</p>		<p>BSP Male Elbow (Positionable)</p> <p>Page : 65</p>
	<p>Port Connector</p> <p>Page : 50</p>		<p>Front Ferrule</p> <p>Page : 59</p>		<p>Male Connector To O-Ring Straight Thread</p> <p>Page : 66</p>
	<p>Male Adapter To Tube</p> <p>Page : 51</p>		<p>Back Ferrule</p> <p>Page : 60</p>		<p>Male Connector To SAE/MS Straight Thread</p> <p>Page : 68</p>
	<p>Female To Tube</p> <p>Page : 53</p>		<p>Ferrule Set</p> <p>Page : 61</p>		<p>Male Pipe Weld</p> <p>Page : 69</p>
	<p>AN Thread</p> <p>Page : 55</p>		<p>Plug</p> <p>Page : 62</p>		



A: Material	B: Tube Size		C: Fitting Type	D: Second End Connection Size		E: Second End Connection Type
	Fractional	Metric		Fractional	Metric	
SS	2		MC	2		AN
SS 316	2: 1/8"	3MO: 3mm	AN: 37° Flare Connector	2: 1/8"	3MO: 3mm	AN: 37° male AN
	3: 3/16"	6MO: 6mm	BAD: Bulkhead Adapter	3: 3/16"	6MO: 6mm	ANF: 37° female AN
	4: 1/4"	8MO: 8mm	BAN: 37° Flare Bulkhead Connector	4: 1/4"	8MO: 8mm	BT: Bored-through fitting
	5: 5/16"	10MO: 10mm	BF: Back Ferrule	5: 5/16"	10MO: 10mm	F: Female thread
	6: 3/8"	12MO: 12mm	CP: Cap	6: 3/8"	12MO: 12mm	RG: ISO/BSP parallel pipe thread (gauge)
	8: 1/2"	14MO: 14mm	FAD: Female Adapter	8: 1/2"	14MO: 14mm	RJ: ISO/BSP parallel pipe thread (Japanese gauge)
	10: 5/8"	16MO: 16mm	FBC: Female Bulkhead Connector	10: 5/8"	16MO: 16mm	RP: ISO/BSP parallel pipe thread
	12: 3/4"	18MO: 18mm	FBT: Female Branch Tee	12: 3/4"	18MO: 18mm	RS: ISO/BSP parallel pipe thread
	14: 7/8"	20MO: 20mm	FC: Female Connector	14: 7/8"	20MO: 20mm	RT: ISO/BSP tapered pipe thread
	16: 1"	22MO: 22mm	FE: Female Elbow	16: 1"	22MO: 22mm	W: Male pipe weld/ tube socket weld
		25MO: 25mm	FF: Front Ferrule		25MO: 25mm	
			FRT: Female Run Tee			
			HME: 45° Male Elbow			
			MAD: Male Adapter			
			MBC: Male Bulkhead Connector			
			MBT: Tee Male Branch Tee			
			MC: Male Connector			
			MCOR: Male Connector to O-Ring			
			MCST: Male Connector TO SAE			
			MCW: Buttweld Connector			
			ME: 90 ° Male Elbow			
			MEPR: Male Elbow (Positionable)			
			MRT: Male Run Tee			
			MTC: Thermocouple Connector			
			NU: Nut			
			PG: Plug			
			PO: Port Connector			
			RD: Reducer			
			RU: Reducing Union			
			SET: Ferrule Set			
			UC: Union Cross			
			UE: Union Elbow			
			UN: Union			
			UT: Union Tee			

PRODUCT

Male Connector For Fractional Tube



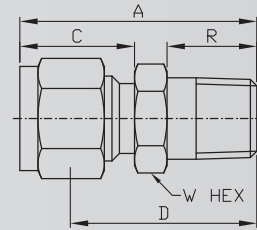
Unit= mm

NANOPURE PART NO.	INTER CHANGES	INCHES						
		TUBE O.D.	NPT PIPE THREAD	A	C	D	R	W HEX
2-MC-2	200-1-2	1/8	1/8	1.20	0.60	0.94	0.38	7/16
2-MC-4	200-1-4	1/8	1/4	1.40	0.60	1.14	0.56	9/16
2-MC-6	200-1-6	1/8	3/8	1.42	0.60	1.16	0.56	11/16
2-MC-8	200-1-8	1/8	1/2	1.67	0.60	1.41	0.75	7/8
3-MC-2	300-1-2	3/16	1/8	1.23	0.64	0.97	0.38	7/16
3-MC-4	300-1-4	3/16	1/4	1.43	0.64	1.17	0.56	9/16
4-MC-2	400-1-2	1/4	1/8	1.29	0.70	1.00	0.38	1/2
4-MC-4	400-1-4	1/4	1/4	1.49	0.70	1.20	0.56	9/16
4-MC-6	400-1-6	1/4	3/8	1.51	0.70	1.22	0.56	11/16
4-MC-8	400-1-8	1/4	1/2	1.76	0.70	1.47	0.75	7/8
4-MC-12	400-1-12	1/4	3/4	1.82	0.70	1.53	0.75	1-1/16
5-MC-2	500-1-2	5/16	1/8	1.34	0.73	1.05	0.38	9/16
5-MC-4	500-1-4	5/16	1/4	1.52	0.73	1.23	0.56	9/16
5-MC-6	500-1-6	5/16	3/8	1.55	0.73	1.25	0.56	11/16
5-MC-8	500-1-8	5/16	1/2	1.79	0.73	1.50	0.75	7/8
6-MC-2	600-1-2	3/8	1/8	1.38	0.76	1.09	0.38	5/8
6-MC-4	600-1-4	3/8	1/4	1.57	0.76	1.28	0.56	5/8
6-MC-6	600-1-6	3/8	3/8	1.57	0.76	1.28	0.56	11/16
6-MC-8	600-1-8	3/8	1/2	1.82	0.76	1.53	0.75	7/8
6-MC-12	600-1-12	3/8	3/4	1.88	0.76	1.59	0.75	1-1/16
8-MC-2	810-1-2	1/2	1/8	1.53	0.87	1.13	0.38	13/16
8-MC-4	810-1-4	1/2	1/4	1.71	0.87	1.31	0.56	13/16
8-MC-6	810-1-6	1/2	3/8	1.71	0.87	1.31	0.56	13/16
8-MC-8	810-1-8	1/2	1/2	1.93	0.87	1.53	0.75	7/8
8-MC-12	810-1-12	1/2	3/4	1.99	0.87	1.59	0.75	1-1/16
8-MC-16	810-1-16	1/2	1	2.28	0.87	1.88	0.94	1-3/8
10-MC-6	1010-1-6	5/8	3/8	1.74	0.87	1.34	0.56	15/16
10-MC-8	1010-1-8	5/8	1/2	1.93	0.87	1.53	0.75	15/16
10-MC-12	1010-1-12	5/8	3/4	1.99	0.87	1.59	0.75	1-1/16
12-MC-8	1210-1-8	3/4	1/2	1.99	0.87	1.59	0.75	1-1/16
12-MC-12	1210-1-12	3/4	3/4	1.99	0.87	1.59	0.75	1-1/16
12-MC-16	1210-1-16	3/4	1	2.28	0.87	1.88	0.94	1-3/8
14-MC-12	1410-1-12	7/8	3/4	1.99	0.87	1.59	0.75	1-3/16
14-MC-16	1410-1-16	7/8	1	2.28	0.87	1.88	0.94	1-3/8
16-MC-8	1610-1-8	1	1/2	2.27	1.05	1.78	0.75	1-3/8
16-MC-12	1610-1-12	1	3/4	2.27	1.05	1.78	0.75	1-3/8
16-MC-16	1610-1-16	1	1	2.46	1.05	1.97	0.94	1-3/8

Male Connector For Metric Tube

NANOPURE PART NO.	INTER CHANGES	MILLIMETERS						
		TUBE O.D.	NPT THREAD	A	C	D	R	W HEX
3MO-MC-2	3MO-1-2	3	1/8	29,7	15,3	23,1	9,5	12,0
3MO-MC-4	3MO-1-4	3	1/4	35,3	15,3	28,7	14,3	14,0
4MO-MC-2	4MO-1-2	4	1/8	31,2	16,1	24,6	9,5	12,0
4MO-MC-4	4MO-1-4	4	1/4	36,3	16,1	29,7	14,3	14,0
6MO-MC-2	6MO-1-2	6	1/8	32,9	17,7	25,4	9,5	14,0
6MO-MC-4	6MO-1-4	6	1/4	38,1	17,7	30,6	14,3	14,0
6MO-MC-6	6MO-1-6	6	3/8	38,5	17,7	31,0	14,3	18,0
6MO-MC-8	6MO-1-8	6	1/2	44,8	17,7	37,3	19,1	22,0
8MO-MC-2	8MO-1-2	8	1/8	34,2	18,6	26,7	9,5	15,0
8MO-MC-4	8MO-1-4	8	1/4	38,8	18,6	31,3	14,3	15,0
8MO-MC-6	8MO-1-6	8	3/8	39,3	18,6	31,8	14,3	18,0
8MO-MC-8	8MO-1-8	8	1/2	45,6	18,6	38,1	19,1	22,0
10MO-MC-2	10MO-1-2	10	1/8	36,1	19,5	28,6	9,5	18,0
10MO-MC-4	10MO-1-4	10	1/4	40,9	19,5	33,3	14,3	18,0
10MO-MC-6	10MO-1-6	10	3/8	40,9	19,5	33,3	14,3	18,0
10MO-MC-8	10MO-1-8	10	1/2	47,5	19,5	38,9	19,1	22,0
10MO-MC-12	10MO-1-12	10	3/4	46,4	19,5	38,9	19,1	27,0
10MO-MC-16	10MO-1-16	10	1	55,0	19,5	47,5	23,8	35,0
12MO-MC-4	12MO-1-4	12	1/4	43,4	22,0	33,3	14,3	22,0
12MO-MC-6	12MO-1-6	12	3/8	43,4	22,0	33,3	14,3	22,0
12MO-MC-8	12MO-1-8	12	1/2	49,0	22,0	38,9	19,1	22,0
12MO-MC-12	12MO-1-12	12	3/4	50,5	22,0	40,4	19,1	27,0
14MO-MC-4	14MO-1-4	14	1/4	44,2	22,0	34,1	14,3	24,0
14MO-MC-6	14MO-1-6	14	3/8	44,2	22,0	34,1	14,3	24,0
14MO-MC-8	14MO-1-8	14	1/2	49,0	22,0	38,9	19,1	24,0
15MO-MC-8	15MO-1-8	15	1/2	49,0	22,0	38,9	19,1	24,0
16MO-MC-6	16MO-1-6	16	3/8	44,1	22,0	34,01	14,3	24,0
16MO-MC-8	16MO-1-8	16	1/2	49,0	22,0	38,9	19,1	24,0
16MO-MC-12	16MO-1-12	16	3/4	50,5	22,0	40,5	19,1	27,0
18MO-MC-8	18MO-1-8	18	1/2	50,6	22,0	40,5	19,1	27,0
18MO-MC-12	18MO-1-12	18	3/4	50,6	22,0	40,5	19,1	27,0
20MO-MC-8	20MO-1-8	20	1/2	50,6	22,0	42,2	19,1	30,0
20MO-MC-12	20MO-1-12	20	3/4	52,3	22,0	42,2	19,1	30,0
20MO-MC-16	20MO-1-16	20	1	57,7	22,0	47,6	23,8	35,0
22MO-MC-12	22MO-1-12	22	3/4	52,3	22,0	42,2	19,1	35,0
25MO-MC-8	25MO-1-8	25	1/2	57,5	22,0	45,3	19,1	35,0
25MO-MC-12	25MO-1-12	25	3/4	57,5	22,0	45,2	19,1	35,0
25MO-MC-16	25MO-1-16	25	1	62,3	22,0	50,0	23,8	35,0

BSP Taper Male Connector For Fractional Tube



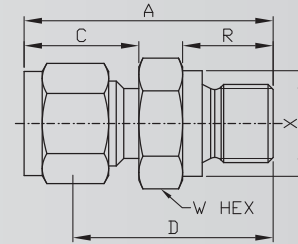
Unit= mm

NANOPURE PART NO.	INTER CHANGES	INCHS							
		TUBE O.D.	BSP TR THREAD	A	C	D	R	W HEX	BORE
5-MC-2RT	500-1-2RT	5/16	1/8	1.34	0.73	1.05	0.38	9/16	0.19
5-MC-4RT	500-1-4RT	5/16	1/4	1.52	0.73	1.23	0.56	9/16	0.19
6-MC-2RT	600-1-2RT	3/8	1/8	1.39	0.76	1.09	0.38	5/8	0.19
6-MC-4RT	600-1-4RT	3/8	1/4	1.57	0.76	1.28	0.56	5/8	0.28
6-MC-6RT	600-1-6RT	3/8	3/8	1.57	0.76	1.28	0.56	11/16	0.28
6-MC-8RT	600-1-8RT	3/8	1/2	1.82	0.76	1.53	0.75	7/8	0.28
8-MC-4RT	810-1-4RT	1/2	1/4	1.69	0.86	1.31	0.56	13/16	0.28
8-MC-6RT	810-1-6RT	1/2	3/8	1.69	0.86	1.31	0.56	13/16	0.38
8-MC-8RT	810-1-8RT	1/2	1/2	1.91	0.86	1.53	0.75	7/8	0.41

BSP Taper Male Connector For Metric Tube

NANOPURE PART NO.	INTER CHANGES	MILLIMETERS						
		TUBE O.D.	BSP TR THREAD	A	C	D	R	W HEX
3MO-MC-2RT	3MO-1-2RT	3	1/8	29,7	15,3	23,1	9,7	12,0
3MO-MC-4RT	3MO-1-4RT	3	1/4	35,3	15,3	28,7	14,2	14,0
4MO-MC-2RT	4MO-1-2RT	4	1/8	31,2	16,1	24,6	9,7	12,0
4MO-MC-4RT	4MO-1-4RT	4	1/4	36,3	16,1	29,7	14,2	14,0
6MO-MC-2RT	6MO-1-2RT	6	1/8	32,9	17,7	25,4	9,7	14,0
6MO-MC-4RT	6MO-1-4RT	6	1/4	40,0	17,7	30,5	14,2	14,0
6MO-MC-6RT	6MO-1-6RT	6	3/8	38,5	17,7	31,0	14,2	18,0
6MO-MC-8RT	6MO-1-8RT	6	1/2	45,6	17,7	38,1	19,1	22,0
8MO-MC-2RT	8MO-1-2RT	8	1/8	33,9	18,6	26,4	9,5	15,0
8MO-MC-4RT	8MO-1-4RT	8	1/4	38,7	18,6	31,2	14,2	15,0
8MO-MC-6RT	8MO-1-6RT	8	3/8	39,3	18,6	31,8	14,2	18,0
8MO-MC-8RT	8MO-1-8RT	8	1/2	45,6	18,6	38,1	19,1	22,0
10MO-MC-2RT	10MO-1-2RT	10	1/8	36,2	19,5	28,6	9,5	18,0
10MO-MC-4RT	10MO-1-4RT	10	1/4	40,9	19,5	33,3	14,2	18,0
10MO-MC-6RT	10MO-1-6RT	10	3/8	40,9	19,5	33,3	14,2	18,0
10MO-MC-8RT	10MO-1-8RT	10	1/2	46,5	19,5	38,9	19,1	22,0
12MO-MC-4RT	12MO-1-4RT	12	1/4	43,4	22,0	33,3	14,2	22,0
12MO-MC-6RT	12MO-1-6RT	12	3/8	43,4	22,0	33,3	14,2	22,0
12MO-MC-8RT	12MO-1-8RT	12	1/2	49,0	22,0	38,9	19,1	22,0
12MO-MC-12RT	12MO-1-12RT	12	3/4	49,5	22,0	40,4	19,1	27,0
15MO-MC-8RT	15MO-1-8RT	15	1/2	49,0	22,0	38,9	19,1	24,0
16MO-MC-6RT	16MO-1-6RT	16	3/8	44,2	22,0	34,1	14,2	24,0
16MO-MC-8RT	16MO-1-8RT	16	1/2	49,0	22,0	38,9	19,1	24,0
16MO-MC-12RT	16MO-1-12RT	16	3/4	49,5	22,0	40,5	19,1	27,0
18MO-MC-1-8RT	18MO-1-8RT	18	1/2	50,6	22,0	40,4	19,1	27,0
18MO-MC-1-12RT	18MO-1-12RT	18	3/4	50,6	22,0	40,4	19,1	27,0
20MO-MC-1-8RT	20MO-1-8RT	20	1/2	52,3	22,0	42,2	19,1	30,0
20MO-MC-1-12RT	20MO-1-12RT	20	3/4	52,3	22,0	42,2	19,1	30,0
22MO-MC-1-12RT	22MO-1-12RT	22	3/4	52,3	22,0	42,2	19,1	30,0
25MO-MC-12RT	25MO-1-12RT	25	3/4	57,5	26,5	45,2	19,1	35,0
25MO-MC-16RT	25MO-1-16RT	25	1	62,3	26,5	50,0	23,9	35,0

BSP Male Connector For Fractional Tube



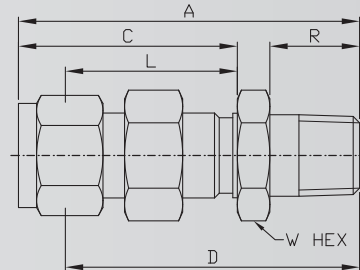
Unit= mm

NANOPURE PART NO.	INTER CHANGES	INCHS								BORE
		TUBE O.D.	BSP TR THREAD	A	C	D	R	X	W HEX	
2-MC-2RS	200-1-2RS	1/8	1/8	1.18	0.60	.922	0.28	0.54	9/16	0.16
2-MC-4RS	200-1-4RS	1/8	1/4	1.27	0.60	1.13	0.44	0.70	3/4	0.09
2-MC-6RS	200-1-6RS	1/8	3/8	1.46	0.60	1.172	0.44	0.86	7/8	0.28
4-MC-2RS	400-1-2RS	1/4	1/8	1.28	0.70	.98	0.28	0.54	9/16	0.16
4-MC-4RS	400-1-4RS	1/4	1/4	1.49	0.70	1.19	0.44	0.70	3/4	0.19
4-MC-6RS	400-1-6RS	1/4	3/8	1.55	0.70	1.25	0.44	0.86	7/8	0.19
4-MC-8RS	400-1-8RS	1/4	1/2	1.77	0.70	1.47	0.56	1.01	1-1/16	0.19
6-MC-2RS	600-1-2RS	3/8	1/8	1.35	0.76	1.06	0.28	0.54	5/8	0.16
6-MC-4RS	600-1-4RS	3/8	1/4	1.54	0.76	1.25	0.44	0.70	3/4	0.25
6-MC-6RS	600-1-6RS	3/8	3/8	1.57	0.76	1.28	0.44	0.86	7/8	0.28
6-MC-8RS	600-1-8RS	3/8	1/2	1.82	0.76	1.53	0.56	1.01	1-1/16	0.28
8-MC-4RS	810-1-4RS	1/2	1/4	1.66	0.86	1.28	0.44	0.70	13/16	0.25
8-MC-6RS	810-1-6RS	1/2	3/8	1.69	0.86	1.31	0.44	0.86	7/8	0.31
8-MC-8RS	810-1-8RS	1/2	1/2	1.91	0.86	1.53	0.56	1.01	1-1/16	0.41
12-MC-8RS	1210-1-8RS	3/4	1/2	1.93	0.86	1.531	0.56	1.01	1-1/16	0.41
12-MC-12RS	1210-1-12RS	3/4	3/4	2.07	0.86	1.69	0.63	1.25	1-3/8	0.63
16-MC-8RS	1610-1-8RS	1	1/2	2.21	1.04	1.719	0.56	1.01	1-3/8	0.41
16-MC-16RS	1610-1-16RS	1	1	2.35	1.04	1.88	0.72	1.52	1-5/8	0.88

BSPB Male Connector For Metric Tube

NANOPURE PART NO.	INTER CHANGES	MILLIMETERS							
		TUBE O.D.	BSPB THREAD	A	C	D	R	X	W HEX
2MO-MC-2RS	2MO-1-2RS	2	1/8	28,4	15,3	21,8	7,1	14,0	13,7
3MO-MC-2RS	3MO-1-2RS	3	1/8	30,0	15,3	23,4	7,1	13,7	14,0
3MO-MC-4RS	3MO-1-4RS	3	1/4	35,3	15,3	28,7	11,2	17,8	19,0
6MO-MC-2RS	6MO-1-2RS	6	1/8	32,5	17,7	25,0	7,1	13,7	14,0
6MO-MC-4RS	6MO-1-4RS	6	1/4	37,7	17,7	30,2	11,2	17,8	19,0
6MO-MC-6RS	6MO-1-6RS	6	3/8	39,0	17,7	31,5	11,2	21,8	22,0
6MO-MC-8RS	6MO-1-8RS	6	1/2	45,6	17,7	38,1	14,2	25,7	27,0
8MO-MC-2RS	8MO-1-2RS	8	1/8	33,1	18,6	25,6	7,1	15,0	13,7
8MO-MC-4RS	8MO-1-4RS	8	1/4	38,5	18,6	31,0	11,2	17,8	19,0
8MO-MC-6RS	8MO-1-6RS	8	3/8	39,8	18,6	32,3	11,2	21,8	22,0
8MO-MC-8RS	8MO-1-8RS	8	1/2	45,6	18,6	38,1	14,2	25,7	27,0
10MO-MC-4RS	10MO-1-4RS	10	1/4	39,4	19,5	31,8	11,2	17,8	19,0
10MO-MC-6RS	10MO-1-6RS	10	3/8	40,6	19,5	33,0	11,2	21,8	22,0
10MO-MC-8RS	10MO-1-8RS	10	1/2	46,5	19,5	38,9	14,2	25,7	27,0
12MO-MC-4RS	12MO-1-4RS	12	1/4	42,6	22,0	32,5	11,2	17,8	22,0
12MO-MC-6RS	12MO-1-6RS	12	3/8	43,1	22,0	33,0	11,2	21,8	22,0
12MO-MC-8RS	12MO-1-8RS	12	1/2	49,0	22,0	38,9	14,2	25,7	27,0
12MO-MC-12RS	12MO-1-12RS	12	3/4	52,8	22,0	42,7	16,0	31,8	35,0
16MO-MC-6RS	16MO-1-6RS	16	3/8	43,5	22,0	33,4	11,2	22,0	21,8
16MO-MC-8RS	16MO-1-8RS	16	1/2	49,0	22,0	38,9	14,2	26,0	27,0
18MO-MC-8RS	18MO-1-8RS	18	1/2	49,0	22,0	38,9	14,2	26,0	27,0
18MO-MC-12RS	18MO-1-12RS	18	3/4	53,1	22,0	43,0	16,0	35,0	32,0
20MO-MC-8RS	20MO-1-8RS	20	1/2	50,5	22,0	40,4	14,2	30,0	25,7
20MO-MC-12RS	20MO-1-12RS	20	3/4	52,8	22,0	42,7	16,0	32,0	35,0
22MO-MC-12RS	22MO-1-12RS	22	3/4	52,8	22,0	42,7	16,0	32,0	35,0
25MO-MC-12RS	25MO-1-12RS	25	3/4	59,8	26,5	47,6	16,0	35,0	31,8
25MO-MC-16RS	25MO-1-16RS	25	1	60,1	26,5	47,8	18,3	39,0	41,0

Male Bulkhead Connector For Fractional Tube



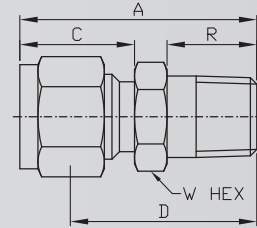
Unit= mm

NANOPURE PART NO.	INTER CHANGES	INCHES							
		TUBE O.D.	NPT PIPE THREAD	A	C	D	L	R	W HEX
1-MBC-1	100-11-1	1/16	1/16	1.19	0.68	1.038	0.53	0.38	5/16
1-MBC-2	100-11-2	1/16	1/8	1.27	0.68	1.116	0.53	0.38	7/16
2-MBC-2	200-11-2	1/8	1/8	1.83	1.23	1.571	0.97	0.38	1/2
3-MBC-2	300-11-2	3/16	1/8	1.89	1.26	1.634	1.00	0.38	9/16
4-MBC-2	400-11-2	1/4	1/8	1.95	1.31	1.655	1.02	0.38	5/8
4-MBC-4	400-11-4	1/4	1/4	2.132	1.31	1.842	1.02	0.56	5/8
4-MBC-6	400-11-6	1/4	3/8	2.162	1.31	1.872	1.02	0.56	11/16
4-MBC-8	400-11-8	1/4	1/2	2.374	1.31	2.084	1.02	0.75	7/8
5-MBC-2	500-11-2	5/16	1/8	2.08	1.42	1.779	1.12	0.38	11/16
5-MBC-4	500-11-4	5/16	1/4	2.27	1.42	1.966	1.12	0.56	11/16
6-MBC-2	600-11-2	3/8	1/8	2.08	1.44	1.788	1.15	0.38	3/4
6-MBC-4	600-11-4	3/8	1/4	2.265	1.44	1.975	1.15	0.56	3/4
6-MBC-6	600-11-6	3/8	3/8	2.265	1.44	1.975	1.15	0.56	3/4
6-MBC-8	600-11-8	3/8	1/2	2.48	1.44	2.219	1.15	0.75	7/8
8-MBC-4	810-11-4	1/2	1/4	2.494	1.65	2.094	1.25	0.56	15/16
8-MBC-6	810-11-6	1/2	3/8	2.494	1.65	2.094	1.25	0.56	15/16
8-MBC-8	810-11-8	1/2	1/2	2.712	1.65	2.312	1.25	0.75	15/16
8-MBC-12	810-11-12	1/2	3/4	2.722	1.65	2.322	1.25	0.75	1-1/8
10-MBC-6	1010-11-6	5/8	3/8	2.628	1.68	2.228	1.28	0.56	1-1/16
10-MBC-8	1010-11-8	5/8	1/2	2.816	1.68	2.416	1.28	0.75	1-1/16
12-MBC-8	1210-11-8	3/4	1/2	3.00	1.87	2.601	1.47	0.75	1-3/16
12-MBC-12	1210-11-12	3/4	3/4	3.00	1.87	2.601	1.47	0.75	1-3/16
14-MBC-12	1410-11-12	7/8	3/4	3.31	2.09	2.913	1.69	0.75	1-3/8
16-MBC-12	1610-11-12	1	3/4	3.54	2.27	3.006	1.78	0.75	1-5/8
16-MBC-16	1610-11-16	1	1	3.72	2.27	3.194	1.78	0.94	1-5/8

Male Bulkhead Connector For Metric Tube

NANOPURE PART NO.	INTER CHANGES	MILLIMETERS									
		TUBE O.D.	NPT THREAD	A	C	D	L	R	W HEX	B'HEAD HOLE DRILL SIZE	MAX. B'HEAD THICK.
6MO-MBC-2	6MO-11-2	6	1/8	49,6	33,7	42,1	26,2	9,5	16,0	11,5	10,2
6MO-MBC-4	6MO-11-4	6	1/4	53,5	33,7	46,0	26,2	14,3	16,0	11,5	10,2
8MO-MBC-2	8MO-11-2	8	1/8	52,3	36,0	44,8	28,5	9,5	18,0	13,1	11,2
8MO-MBC-4	8MO-11-4	8	1/4	57,5	36,0	50,0	28,5	14,3	18,0	13,1	11,2
10MO-MBC-4	10MO-11-4	10	1/4	58,4	37,0	50,8	29,4	14,3	22,0	16,3	11,2
10MO-MBC-6	10MO-11-6	10	3/8	58,4	37,0	50,8	29,4	14,3	22,0	16,3	11,2
10MO-MBC-8	10MO-11-8	10	1/2	63,1	37,0	55,5	29,4	19,0	22,0	16,3	11,2
12MO-MBC-4	12MO-11-4	12	1/4	63,3	10,1	53,2	31,8	14,3	24,0	19,5	12,7
12MO-MBC-6	12MO-11-6	12	3/8	64,5	10,1	54,4	31,8	14,3	24,0	19,5	12,7
12MO-MBC-8	12MO-11-8	12	1/2	67,5	10,1	57,4	31,8	19,0	24,0	19,5	12,7

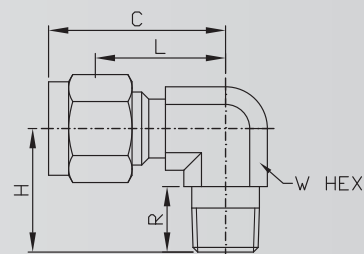
Thermocouple Connector For Fractional Tube



Unit= mm

NANOPURE PART NO.	INTER CHANGES	INCHES						
		TUBE O.D.	NPT PIPE THREAD	A	C	D	R	W HEX
2-MTC-2BT	200-1-2BT	1/8	1/8	1.20	0.60	0.94	0.38	7/16
2-MTC-4BT	200-1-4BT	1/8	1/4	1.40	0.60	1.14	0.56	9/16
3-MTC-2BT	300-1-2BT	3/16	1/8	1.23	0.64	0.97	0.38	7/16
3-MTC-4BT	300-1-4BT	3/16	1/4	1.43	0.64	1.17	0.56	9/16
4-MTC-2BT	400-1-2BT	1/4	1/8	1.29	0.70	1.00	0.38	1/2
4-MTC-4BT	400-1-4BT	1/4	1/4	1.49	0.70	1.20	0.56	9/16
4-MTC-6BT	400-1-6BT	1/4	3/8	1.60	0.70	1.22	0.56	11/16
4-MTC-8BT	400-1-8BT	1/4	1/2	1.87	0.70	1.47	0.75	7/8
5-MTC-4BT	500-1-4BT	5/16	1/4	1.52	0.73	1.22	0.56	9/16
6-MTC-4BT	600-1-4BT	3/8	1/4	1.57	0.76	1.28	0.56	5/8
6-MTC-6BT	600-1-6BT	3/8	3/8	1.57	0.76	1.28	0.56	11/16
6-MTC-8BT	600-1-8BT	3/8	1/2	1.82	0.76	1.53	0.75	7/8
6-MTC-12BT	600-1-12BT	3/8	3/4	1.88	0.76	1.59	0.75	1-1/16
8-MTC-8BT	810-1-8BT	1/2	1/2	1.93	0.87	1.53	0.76	7/8
8-MTC-12BT	810-1-12BT	1/2	3/4	1.99	0.87	1.59	0.75	1-1/16
10-MTC-12BT	1010-1-12BT	5/8	3/4	1.99	0.87	1.59	0.75	1-1/16
12-MTC-12BT	1210-1-12BT	3/4	3/4	1.99	0.87	1.59	0.75	1-1/16
16-MTC-16BT	1610-1-16BT	1	1	2.46	1.05	1.97	0.94	1-3/8

Male Elbow For Fractional Tube



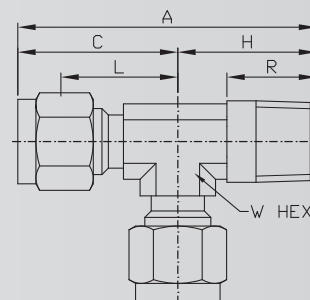
Unit= mm

NANOPURE PART NO.	INTER CHANGES	INCHES						
		TUBE O.D.	NPT PIPE THREAD	C	H	L	R	W HEX
2-ME-2	200-2-2	1/8	1/8	0.93	0.70	0.67	0.38	7/16
2-ME-4	200-2-4	1/8	1/4	0.97	0.93	0.72	0.56	9/16
3-ME-2	300-2-2	3/16	1/8	1.00	0.74	0.74	0.38	1/2
3-ME-4	300-2-4	3/16	1/4	1.00	0.93	0.74	0.56	9/16
4-ME-2	400-2-2	1/4	1/8	1.06	0.74	0.77	0.38	1/2
4-ME-4	400-2-4	1/4	1/4	1.06	0.93	0.77	0.56	9/16
4-ME-6	400-2-6	1/4	3/8	1.17	1.04	0.88	0.56	11/16
4-ME-8	400-2-8	1/4	1/2	1.25	1.31	0.96	0.75	13/16
5-ME-2	500-2-2	5/16	1/8	1.13	0.79	0.84	0.38	9/16
5-ME-4	500-2-4	5/16	1/4	1.13	0.97	0.84	0.56	9/16
6-ME-2	600-2-2	3/8	1/8	1.20	0.82	0.91	0.38	5/8
6-ME-4	600-2-4	3/8	1/4	1.20	1.01	0.91	0.56	5/8
6-ME-6	600-2-6	3/8	3/8	1.23	1.13	0.97	0.56	11/16
6-ME-8	600-2-8	3/8	1/2	1.31	1.31	1.02	0.75	13/16
6-ME-12	600-2-12	3/8	3/4	1.46	1.46	1.17	0.75	1-1/16
8-ME-4	810-2-4	1/2	1/4	1.42	1.12	1.02	0.56	13/16
8-ME-6	810-2-6	1/2	3/8	1.42	1.12	1.02	0.56	13/16
8-ME-8	810-2-8	1/2	1/2	1.42	1.31	1.02	0.75	13/16
8-ME-12	810-2-12	1/2	3/4	1.57	1.46	1.17	0.75	1-1/16
10-ME-6	1010-2-6	5/8	3/8	1.50	1.20	1.10	0.56	15/16
10-ME-8	1010-2-8	5/8	1/2	1.50	1.39	1.10	0.75	15/16
10-ME-12	1010-2-12	5/8	3/4	1.57	1.46	1.17	0.75	1-1/16
12-ME-8	1210-2-8	3/4	1/2	1.57	1.46	1.17	0.75	1-1/16
12-ME-12	1210-2-12	3/4	3/4	1.57	1.46	1.17	0.75	1-1/16
14-ME-12	1410-2-12	7/8	3/4	1.76	1.65	1.36	0.75	1-3/8
16-ME-12	1610-2-12	1	3/4	1.93	1.65	1.45	0.75	1-3/8
16-ME-16	1610-2-16	1	1	1.93	1.84	1.45	0.94	1-3/8

Male Elbow For Metric Tube

NANOPURE PART NO.	INTER CHANGES	MILLIMETERS						
		TUBE O.D	NPT THREAD	C	H	L	R	W HEX
3MO-ME-4	3MO-2-4	3	1/4	24,6	23,4	18,0	14,2	1/2
4MO-ME-2	4MO-2-2	4	1/8	25,4	18,8	19,2	9,7	1/2
4MO-ME-4	4MO-2-4	4	1/4	26,2	25,4	19,6	14,2	1/2
6MO-ME-2	6MO-2-2	6	1/8	27,0	18,8	19,6	9,7	1/2
6MO-ME-4	6MO-2-4	6	1/4	27,0	23,4	19,6	14,2	1/2
6MO-ME-6	6MO-2-6	6	3/8	29,8	26,2	22,4	14,2	11/16
6MO-ME-8	6MO-2-8	6	1/2	31,8	33,0	24,4	19,0	13/16
8MO-ME-2	8MO-2-2	8	1/8	28,8	19,8	21,3	9,7	9/16
8MO-ME-4	8MO-2-4	8	1/4	28,8	24,4	21,3	14,2	9/16
8MO-ME-6	8MO-2-6	8	3/8	30,6	26,2	23,1	14,2	11/16
8MO-ME-8	8MO-2-8	8	1/2	32,7	33,0	25,2	19,1	13/16
10MO-ME-2	10MO-2-2	10	1/8	31,5	21,6	23,9	9,7	11/16
10MO-ME-4	10MO-2-4	10	1/4	31,5	26,2	23,9	14,2	11/16
10MO-ME-6	10MO-2-6	10	3/8	31,5	26,2	23,9	14,2	11/16
10MO-ME-8	10MO-2-8	10	1/2	33,5	33,0	25,9	19,0	15/16
12MO-ME-4	12MO-2-4	12	1/4	36,0	28,2	25,9	14,2	15/16
12MO-ME-6	12MO-2-6	12	3/8	36,0	28,2	25,9	14,2	15/16
12MO-ME-8	12MO-2-8	12	1/2	36,0	33,0	25,9	19,0	1-1/16
12MO-ME-12	12MO-2-12	12	3/4	39,8	36,8	29,7	19,0	1-1/16
15MO-ME-8	15MO-2-8	15	1/2	38,0	35,1	27,9	19,0	15/16
16MO-ME-6	16MO-2-6	16	3/8	38,0	30,2	27,9	14,2	15/16
16MO-ME-8	16MO-2-8	16	1/2	38,0	35,1	27,9	19	15/16
16MO-ME-12	16MO-2-12	16	3/4	39,8	36,8	29,7	19,0	1-1/16
18MO-ME-8	18MO-2-8	18	1/2	39,8	36,8	29,7	19,0	1-1/16
18MO-ME-12	18MO-2-12	18	3/4	39,8	36,8	29,7	19,0	1-1/16
20MO-ME-8	20MO-2-8	20	1/2	44,6	41,7	34,5	19,0	1-3/8
20MO-ME-12	20MO-2-12	20	3/4	44,6	41,7	34,5	19,0	1-3/8
22MO-ME-12	22MO-2-12	22	3/4	44,6	41,7	34,5	19,0	1-3/8
25MO-ME-12	25MO-2-12	25	3/4	49,1	41,7	36,8	19,0	1-3/8
25MO-ME-16	25MO-2-16	25	1	49,1	46,5	36,8	23,9	1-3/8

Male Run Tee For Fractional Tube



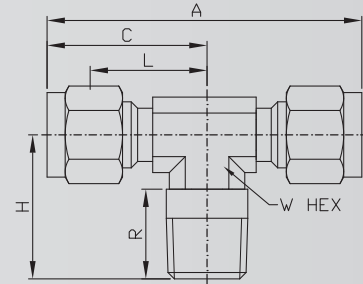
Unit= mm

NANOPURE PART NO.	INTER CHANGES	INCHES							
		TUBE O.D	NPT PIPE THREAD	A	C	H	L	R	W HEX
2-MRT-2TMT	200-3TMT	1/8	1/8	1.63	0.93	0.71	0.66	0.38	7/16
2-MRT-4TMT	200-3-4TMT	1/8	1/4	1.89	0.97	0.93	0.70	0.56	9/16
3-MRT-2TMT	300-3TMT	3/16	1/8	1.66	0.96	0.70	0.70	0.38	7/16
4-MRT-2TMT	400-3TMT	1/4	1/8	1.80	1.06	0.74	0.77	0.38	1/2
4-MRT-4TMT	400-3-4TMT	1/4	1/4	1.98	1.06	0.93	0.77	0.56	1/2
5-MRT-2TMT	500-3TMT	5/16	1/8	1.99	1.17	0.82	0.88	0.38	5/8
5-MRT-4TMT	500-3-4TMT	5/16	1/4	2.18	1.17	1.01	0.88	0.56	5/8
6-MRT-4TMT	600-3TMT	3/8	1/4	2.20	1.20	1.01	0.91	0.56	5/8
6-MRT-6TMT	600-3-6TMT	3/8	3/8	2.42	1.31	1.12	1.02	0.56	13/16
8-MRT-6TMT	810-3TMT	1/2	3/8	2.53	1.42	1.12	1.02	0.56	13/16
8-MRT-8TMT	810-3-8TMT	1/2	1/2	2.72	1.42	1.31	1.02	0.75	7/8
10-MRT-8TMT	1010-3TMT	5/8	1/2	2.88	1.50	1.39	1.10	0.75	15/16
12-MRT-12TMT	1210-3TMT	3/4	3/4	3.02	1.57	1.46	1.17	0.75	1-1/16
14-MRT-12TMT	1410-3-12TMT	7/8	3/4	3.41	1.76	1.65	1.36	0.75	1-3/8
16-MRT-12TMT	1610-3-12TMT	1	3/4	3.59	1.94	1.65	1.45	0.75	1-3/8
16-MRT-16TMT	1610-3-16TMT	1	1	3.78	1.94	1.84	1.45	0.94	1-3/8

Male Run Tee For Metric Tube

NANOPURE PART NO.	INTER CHANGES	MILLIMETERS								INCH
		TUBE O.D	NPT PIPE THREAD	A	C	H	L	R	W HEX	
6MO-MRT-2TMT	6MO-3TMT	6	1/8	45.8	27.0	18.0	19.6	9.7	1/2	
6MO-MRT-4TMT	6MO-3-4TMT	6	1/4	50.3	27.0	23.4	19.6	14.2	1/2	
8MO-MRT-2TMT	8MO-3-2TMT	8	1/8	50.7	29.9	20.8	22.4	9.7	5/8	
8MO-MRT-4TMT	8MO-3-4TMT	8	1/4	55.3	29.9	25.4	22.4	14.2	5/8	
10MO-MRT-4TMT	10MO-3-4TMT	10	1/4	61.7	33.5	28.2	25.9	14.2	13/16	
10MO-MRT-8TMT	10MO-3-8TMT	10	1/2	66.5	33.5	33.0	25.9	19.0	13/16	
12MO-MRT-4TMT	12MO-3-4TMT	12	1/4	64.2	36.0	28.2	25.9	14.2	13/16	
12MO-MRT-6TMT	12MO-3-6TMT	12	3/8	64.2	36.0	28.2	25.9	14.2	13/16	
12MO-MRT-8TMT	12MO-3-8TMT	12	1/2	69.0	36.0	33.0	25.9	19.0	13/16	
16MO-MRT-16TMT	16MO-3TMT	16	1	93.1	46.6	46.5	34.4	23.9	1-3/8	

Male Branch Tee For Fractional Tube



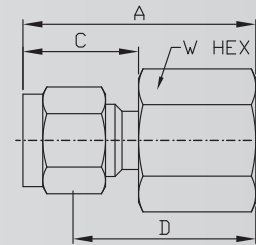
Unit= mm

NANOPURE PART NO.	INTER CHANGES	INCHES							
		TUBE O.D.	NPT PIPE THREAD	A	C	H	L	R	W HEX
2-MBT-2TTM	200-3TTM	1/8	1/8	1.84	0.92	0.70	0.66	0.38	7/16
2-MBT-4TTM	200-3-4TTM	1/8	1/4	1.96	0.98	0.93	0.72	0.56	1/2
3-MBT-2TTM	300-3TTM	3/16	1/8	2.00	1.00	0.74	0.74	0.38	1/2
4-MBT-2TTM	400-3TTM	1/4	1/8	2.12	1.06	0.74	0.77	0.38	1/2
4-MBT-4TTM	400-3-4TTM	1/4	1/4	2.12	1.07	0.93	0.77	0.56	1/2
5-MBT-2TTM	500-3TTM	5/16	1/8	2.34	1.17	0.82	0.88	0.38	5/8
5-MBT-4TTM	500-3-4TTM	5/16	1/4	2.34	1.17	1.01	0.88	0.56	5/8
6-MBT-4TTM	600-3TTM	3/8	1/4	2.40	1.20	1.01	0.91	0.56	5/8
6-MBT-6TTM	600-3-6TTM	3/8	3/8	2.62	1.31	1.12	1.02	0.56	13/16
8-MBT-6TTM	810-3TTM	1/2	3/8	2.84	1.42	1.12	1.02	0.56	13/16
8-MBT-8TTM	810-3-8TTM	1/2	1/2	2.86	1.43	1.31	1.03	0.75	7/8
10-MBT-8TTM	1010-3TTM	5/8	1/2	2.86	1.53	1.42	1.13	0.75	1
12-MBT-12TTM	1210-3TTM	3/4	3/4	3.14	1.57	1.46	1.17	0.75	1-1/16
14-MBT-12TTM	1410-3-12TTM	7/8	3/4	3.52	1.76	1.65	1.36	0.75	1-3/8
16-MBT-12TTM	1610-3-12TTM	1	3/4	3.88	1.94	1.65	1.45	0.75	1-3/8
16-MBT-16TTM	1610-3TTM	1	1	3.88	1.94	1.84	1.45	0.94	1-3/8

Male Branch Tee For Metric Tube

NANOPURE PART NO.	INTER CHANGES	MILLIMETERS							INCH
		TUBE O.D.	NPT THREAD	A	C	H	L	R	W HEX
6MO-MBT-2TTM	6MO-3TTM	6	1/8	53,9	27,0	18,8	19,6	9,7	1/2
6MO-MBT-4TTM	6MO-3-4TTM	6	1/4	53,9	27,0	23,4	19,6	14,2	1/2
8MO-MBT-2TTM	8MO-3TTM	8	1/8	59,7	29,9	20,8	22,4	9,7	5/8
8MO-MBT-4TTM	8MO-3-4TTM	8	1/4	59,7	29,9	25,4	22,4	14,2	5/8
10MO-MBT-4TTM	10MO-3TTM	10	1/4	67,0	33,5	28,2	25,9	14,2	13/16
10MO-MBT-6TTM	10MO-3-6TTM	10	3/8	67,0	33,5	28,2	25,9	14,2	13/16
12MO-MBT-4TTM	12MO-3-4TTM	12	1/4	72,0	36,0	28,2	25,9	14,2	13/16
12MO-MBT-6TTM	12MO-3TTM	12	3/8	72,0	36,0	28,2	25,9	14,2	13/16
12MO-MBT-8TTM	12MO-3-8TTM	12	1/2	72,0	36,0	33,0	25,9	19,0	13/16
16MO-MBT-8TTM	16MO-3TTM	16	1/2	77,6	38,8	35,8	28,7	19,1	1

Female Connector For Fractional Tube



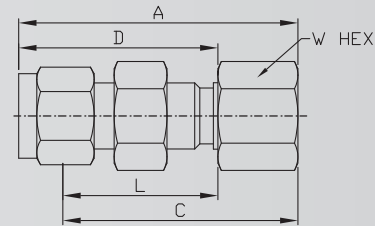
Unit= mm

NANOPURE PART NO.	INTER CHANGES	INCHES					
		TUBE O.D.	NPT PIPE THREAD	A	C	D	W HEX
2-FC-2	200-7-2	1/8	1/8	1.14	0.60	0.88	9/16
2-FC-4	200-7-4	1/8	1/4	1.32	0.60	1.06	3/4
3-FC-2	300-7-2	3/16	1/8	1.17	0.64	0.91	9/16
3-FC-4	300-7-4	3/16	1/4	1.35	0.64	1.09	3/4
4-FC-2	400-7-2	1/4	1/8	1.23	0.70	0.94	9/16
4-FC-4	400-7-4	1/4	1/4	1.42	0.70	1.13	3/4
4-FC-6	400-7-6	1/4	3/8	1.48	0.70	1.19	7/8
4-FC-8	400-7-8	1/4	1/2	1.67	0.70	1.38	1-1/16
5-FC-2	500-7-2	5/16	1/8	1.27	0.73	0.97	9/16
5-FC-4	500-7-4	5/16	1/4	1.46	0.73	1.16	3/4
5-FC-6	500-7-6	5/16	3/8	1.51	0.73	1.219	7/8
6-FC-2	600-7-2	3/8	1/8	1.29	0.76	1.00	5/8
6-FC-4	600-7-4	3/8	1/4	1.48	0.76	1.19	3/4
6-FC-6	600-7-6	3/8	3/8	1.54	0.76	1.25	7/8
6-FC-8	600-7-8	3/8	1/2	1.73	0.76	1.44	1-1/16
6-FC-12	600-7-12	3/8	3/4	1.85	0.76	1.56	1-1/4
8-FC-4	810-7-4	1/2	1/4	1.59	0.87	1.19	13/16
8-FC-6	810-7-6	1/2	3/8	1.65	0.87	1.25	7/8
8-FC-8	810-7-8	1/2	1/2	1.84	0.87	1.44	1-1/16
8-FC-12	810-7-12	1/2	3/4	1.96	0.87	1.56	1-1/4
10-FC-6	1010-7-6	5/8	3/8	1.65	0.87	1.25	15/16
10-FC-8	1010-7-8	5/8	1/2	1.84	0.87	1.44	1-1/16
10-FC-12	1010-7-12	5/8	3/4	1.96	0.87	1.56	1-3/8
12-FC-8	1210-7-8	3/4	1/2	1.84	0.87	1.44	1-1/16
12-FC-12	1210-7-12	3/4	3/4	1.96	0.87	1.56	1-3/8
14-FC-12	1410-7-12	7/8	3/4	1.96	0.87	1.56	1-3/8
16-FC-12	1610-7-12	1	3/4	2.15	1.05	1.66	1-3/8
16-FC-16	1610-7-16	1	1	2.46	1.05	1.97	1-5/8

Female Connector For Metric Tube

NANOPURE PART NO.	INTER CHANGES	MILLIMETERS					
		TUBE O.D.	NPT THREAD	A	C	D	W HEX
3MO-FC-2	3MO-7-2	3	1/8	28,8	15,3	22,2	14,0
3MO-FC-4	3MO-7-4	3	1/4	33,6	15,3	27,0	19,0
4MO-FC-2	4MO-7-2	4	1/8	29,6	16,1	23,0	14,0
6MO-FC-2	6MO-7-2	6	1/8	31,3	17,7	23,8	14,0
6MO-FC-4	6MO-7-4	6	1/4	36,1	17,7	28,6	19,0
6MO-FC-6	6MO-7-6	6	3/8	37,7	17,7	30,2	22,0
6MO-FC-8	6MO-7-8	6	1/2	42,5	17,7	35,0	27,0
8MO-FC-2	8MO-7-2	8	1/8	32,1	18,6	24,6	14,0
8MO-FC-4	8MO-7-4	8	1/4	36,9	18,6	29,4	19,0
8MO-FC-6	8MO-7-6	8	3/8	38,5	18,6	31,0	22,0
10MO-FC-4	10MO-7-4	10	1/4	37,8	19,5	30,2	19,0
10MO-FC-6	10MO-7-6	10	3/8	39,4	19,5	31,8	22,0
10MO-FC-8	10MO-7-8	10	1/2	44,1	19,5	36,5	27,0
12MO-FC-4	12MO-7-4	12	1/4	41,9	22,0	31,8	22,0
12MO-FC-6	12MO-7-6	12	3/8	41,9	22,0	31,8	22,0
12MO-FC-8	12MO-7-8	12	1/2	46,6	22,0	36,5	27,0
16MO-FC-6	16MO-7-6	16	3/8	41,9	22,0	31,8	27,0
16MO-FC-8	16MO-7-8	16	1/2	46,9	22,0	36,5	27,0
20MO-FC-8	20MO-7-8	20	1/2	47,9	22,0	37,8	30,0
20MO-FC-12	20MO-7-12	20	3/4	49,7	22,0	39,6	35,0
22MO-FC-12	22MO-7-12	22	3/4	49,7	22,0	39,6	35,0
25MO-FC-12	25MO-7-12	25	3/4	53,6	26,5	41,3	35,0
25MO-FC-16	25MO-7-16	25	1	62,3	26,5	50,0	41,0

Female Bulkhead Connector For Fractional Tube



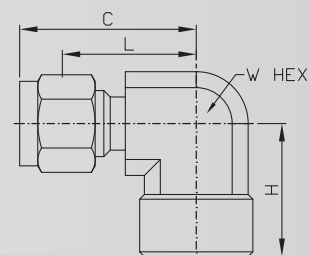
Unit= mm

NANOPURE PART NO.	INTER CHANGES	INCHES						
		TUBE O.D.	NPT PIPE THREAD	A	C	D	L	W HEX
2-FBC-2	200-71-2	1/8	1/8	1.76	1.23	1.50	0.97	9/16
3-FBC-2	300-71-2	3/16	1/8	1.79	1.26	1.53	1.00	9/16
4-FBC-2	400-71-2	1/4	1/8	1.86	1.31	1.56	1.02	5/8
4-FBC-4	400-71-4	1/4	1/4	2.04	1.31	1.75	1.02	3/4
5-FBC-2	500-71-2	5/16	1/8	1.96	1.42	1.66	1.12	11/16
5-FBC-8	500-71-8	5/16	1/2	2.38	1.42	2.08	1.12	1-1/16
6-FBC-4	600-71-4	3/8	1/4	2.17	1.44	1.88	1.15	3/4
8-FBC-6	810-71-6	1/2	3/8	2.43	1.65	2.03	1.25	15/16
8-FBC-8	810-71-8	1/2	1/2	2.62	1.65	2.22	1.25	1-1/16
10-FBC-8	1010-71-8	5/8	1/2	2.65	1.68	2.25	1.28	1-1/16
12-FBC-12	1210-71-12	3/4	3/4	2.90	1.87	2.50	1.47	1-3/8
14-FBC-12	1410-71-12	7/8	3/4	3.18	2.09	2.78	1.69	1-3/8
16-FBC-16	1610-71-16	1	1	3.68	2.27	3.19	1.78	1-5/8

Female Bulkhead Connector For Metric Tube

NANOPURE PART NO.	INTER CHANGES	MILLIMETERS								
		TUBE O.D	NPT THREAD	A	C	D	L	W HEX	B' HEAD HOLE DRILL SIZE	MAX. B' HEAD THICK
6MO-FBC-2	6MO-71-2	6	1/8	47,2	33,7	39,7	26,2	16,0	11,5	10,2
6MO-FBC-4	6MO-71-4	6	1/4	52,0	33,7	44,5	26,2	19,0	11,5	10,2
8MO-FBC-2	8MO-71-2	8	1/8	49,6	36,1	42,1	28,5	18,0	13,1	11,2
10MO-FBC-4	10MO-71-4	10	1/4	55,2	37,0	47,6	29,4	19,0	16,3	11,2
12MO-FBC-6	12MO-71-6	12	3/8	60,9	41,9	50,8	31,8	24,0	19,5	12,7
12MO-FBC-8	12MO-71-8	12	1/2	66,4	41,9	56,3	31,8	27,0	19,5	12,7

Female Elbow For Fractional Tube



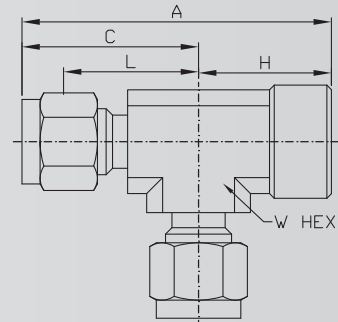
Unit= mm

NANOPURE PART NO.	INTER CHANGES	INCHES					
		TUBE O.D.	NPT PIPE THREAD	C	H	L	W HEX
2-FE-2	200-8-2	1/8	1/8	0.97	0.75	0.71	9/16
2-FE-4	200-8-4	1/8	1/4	1.10	0.88	0.84	3/4
3-FE-2	300-8-2	3/16	1/8	1.00	0.75	0.74	9/16
4-FE-2	400-8-2	1/4	1/8	1.06	0.75	0.77	9/16
4-FE-4	400-8-4	1/4	1/4	1.20	0.88	0.91	11/16
4-FE-6	400-8-6	1/4	3/8	1.25	0.88	0.96	13/16
4-FE-8	400-8-8	1/4	1/2	1.36	1.13	1.07	1
5-FE-2	500-8-2	5/16	1/8	1.13	0.75	0.84	16/19
5-FE-4	500-8-4	5/16	1/4	1.24	0.88	0.94	11/16
6-FE-2	600-8-2	3/8	1/8	1.20	0.75	0.91	5/8
6-FE-4	600-8-4	3/8	1/4	1.26	0.88	0.97	11/16
6-FE-6	600-8-6	3/8	3/8	1.31	0.88	1.02	13/16
6-FE-8	600-8-8	3/8	1/2	1.42	1.13	1.13	1
8-FE-4	810-8-4	1/2	1/4	1.42	0.88	1.02	13/16
8-FE-6	810-8-6	1/2	3/8	1.42	0.88	1.02	13/16
8-FE-8	810-8-8	1/2	1/2	1.53	1.13	1.13	1
10-FE-6	1010-8-6	5/8	3/8	1.50	0.88	1.10	15/16
10-FE-8	1010-8-8	5/8	1/2	1.57	1.13	1.17	1-1/16
12-FE-8	1210-8-8	3/4	1/2	1.57	1.13	1.17	1-1/16
12-FE-12	1210-8-12	3/4	3/4	1.76	1.25	1.36	1-3/8
14-FE-12	1410-8-12	7/8	3/4	1.76	1.25	1.36	1-3/8
16-FE-12	1610-8-12	1	3/4	1.93	1.25	1.45	1-3/8
16-FE-16	1610-8-16	1	1	2.02	1.50	1.53	1-5/8

Female Elbow For Metric Tube

NANOPURE PART NO.	INTER CHANGES	MILLIMETERS					INCH
		TUBE O.D.	NPT THREAD	C	H	L	W HEX
6MO-FE-2	6MO-8-2	6	1/8	27,0	19,0	19,6	1/2
6MO-FE-4	6MO-8-4	6	1/4	29,8	22,4	22,4	11/16
8MO-FE-2	8MO-8-2	8	1/8	28,8	19,1	21,3	9/16
8MO-FE-4	8MO-8-4	8	1/4	30,6	22,4	23,1	11/16
10MO-FE-4	10MO-8-4	10	1/4	33,5	22,4	25,9	13/16
10MO-FE-6	10MO-8-6	10	3/8	33,5	22,4	25,9	13/16
10MO-FE-8	10MO-8-8	10	1/2	36,3	28,5	28,7	1
12MO-FE-4	12MO-8-4	12	1/4	36,0	22,4	25,9	13/16
12MO-FE-6	12MO-8-6	12	3/8	36,0	22,4	25,9	13/16
12MO-FE-8	12MO-8-8	12	1/2	38,8	28,4	28,7	1
16MO-FE-6	16MO-8-6	16	3/8	39,5	23,6	29,7	1-1/16
16MO-FE-8	16MO-8-8	16	1/2	39,5	28,4	29,7	1-1/16

Female Run Tee For Fractional Tube



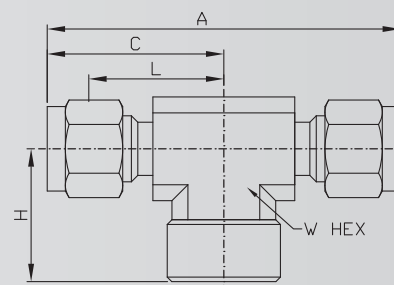
Unit= mm

NANOPURE PART NO.	INTER CHANGES	INCHES						
		TUBE O.D.	NPT PIPE THREAD	A	C	H	L	W HEX
2-FRT-2TFT	200-3-2TFT	1/8	1/8	1.72	0.96	0.75	0.70	1/2
3-FRT-2TFT	300-3-2TFT	3/16	1/8	1.76	1.01	0.75	0.74	1/2
4-FRT-2TFT	400-3-2TFT	1/4	1/8	1.81	1.06	0.75	0.77	1/2
4-FRT-4TFT	400-3-4TFT	1/4	1/4	2.05	1.17	0.88	0.88	11/16
5-FRT-2TFT	500-3-2TFT	5/16	1/8	1.92	1.17	0.75	0.88	5/8
6-FRT-4TFT	600-3-4TFT	3/8	1/4	2.11	1.23	0.88	0.94	11/16
8-FRT-4TFT	810-3-4TFT	1/2	1/4	2.56	1.42	0.88	1.02	13/16
8-FRT-6TFT	810-3-6TFT	1/2	3/8	2.30	1.42	0.88	1.02	7/8
8-FRT-8TFT	810-3-8TFT	1/2	1/2	2.66	1.53	1.13	1.13	1
10-FRT-8TFT	1010-3-8TFT	5/8	1/2	2.70	1.57	1.13	1.17	1-1/16
12-FRT-12TFT	1210-3-12TFT	3/4	3/4	3.01	1.76	1.25	1.36	1-3/8
14-FRT-8TFT	1410-3-8TFT	7/8	1/2	3.01	1.76	1.25	1.36	1-3/8
14-FRT-12TFT	1410-3-12TFT	7/8	3/4	3.01	1.76	1.25	1.36	1-3/8
16-FRT-12TFT	1610-3-12TFT	1	3/4	3.18	1.93	1.25	1.45	1-3/8
16-FRT-16TFT	1610-3-16TFT	1	1	3.52	2.02	1.50	1.65	1-3/8

Female Run Tee For Metric Tube

NANOPURE PART NO.	INTER CHANGES	MILLIMETERS						INCH
		TUBE O.D	NPT THREAD	A	C	H	L	W HEX
6MO-FRT-2TFT	6MO-3TFT	6	1/8	46,0	27,0	19,6	19,6	1/2
6MO-FRT-4TFT	6MO-3-4TFT	6	1/4	52,1	29,8	22,4	22,4	11/16
8MO-FRT-2TFT	8MO-3TFT	8	1/8	48,9	29,9	19,0	22,4	5/8
10MO-FRT-2TFT	10MO-3TFT	10	1/4	55,9	33,5	22,4	25,9	13/16
10MO-FRT-4TFT	12MO-3-4TFT	12	1/4	58,4	36,0	22,4	25,9	13/16
12MO-FRT-6TFT	12MO-3TFT	12	3/8	58,4	36,0	22,4	25,9	13/16
12MO-FRT-8TFT	12MO-3-8TFT	12	1/2	67,3	38,8	28,5	28,7	1
16MO-FRT-12TFT	16MO-3TFT	16	1/2	68,2	39,8	28,4	29,7	1-1/16

Female Branch Tee For Fractional Tube



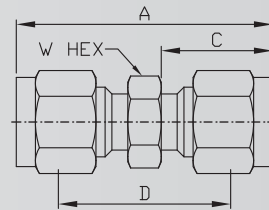
Unit= mm

NANOPURE PART NO.	INTER CHANGES	INCHES						
		TUBE O.D.	NPT PIPE THREAD	A	C	H	L	W HEX
2-FBT-2TTF	200-3-2TTF	1/8	1/8	1.91	1.01	0.75	0.70	1/2
3-FBT-2TTF	300-3-2TTF	3/16	1/8	2.02	1.01	0.75	0.74	1/2
4-FBT-2TTF	400-3-2TTF	1/4	1/8	2.12	1.06	0.75	0.77	1/2
4-FBT-4TTF	400-3-4TTF	1/4	1/4	2.34	1.17	0.88	0.88	11/16
5-FBT-2TTF	500-3-2TTF	5/16	1/8	2.34	1.17	0.75	0.88	5/8
6-FBT-4TTF	600-3-4TTF	3/8	1/4	2.46	1.23	0.88	0.94	11/16
8-FBT-4TTF	810-3-4TTF	1/2	1/4	2.84	1.42	0.88	1.02	13/16
8-FBT-6TTF	810-3-6TTF	1/2	3/8	2.84	1.42	0.88	1.02	7/8
8-FBT-8TTF	810-3-8TTF	1/2	1/2	3.06	1.53	1.13	1.13	1
10-FBT-8TTF	1010-3-8TTF	5/8	1/2	3.06	1.53	1.13	1.13	1
12-FBT-12TTF	1210-3-12TTF	3/4	3/4	3.52	1.76	1.25	1.36	1-3/8
14-FBT-12TTF	1410-3-12TTF	7/8	3/4	3.52	1.76	1.25	1.36	1-3/8
16-FBT-12TTF	1610-3-12TTF	1	3/4	3.86	1.94	1.25	1.45	1-3/8
16-FBT-16TTF	1610-3-16TTF	1	1	4.28	2.14	1.50	1.65	1-3/8

Female Branch Tee For Metric Tube

NANOPURE PART NO.	INTER CHANGES	MILLIMETERS						INCH
		TUBE O.D	NPT THREAD	A	C	H	L	W HEX
6M-FBT-2TTF	6MO-3-2TTF	6	1/8	53,9	27,0	19,0	19,6	1/2
6M-FBT-4TTF	6MO3-4TTF	6	1/4	59,5	29,8	22,4	22,4	11/16
8M-FBT-3TTF	8MO-3TTF	8	1/8	59,7	29,9	19,0	22,4	5/8
10M-FBT-3TTF	10MO-3TTF	10	1/4	67,0	33,5	22,4	25,9	13/16
12M-FBT-3TTF	12MO-3TTF	12	1/8	72,0	36,0	22,3	25,9	13/16
12M-FBT-4TTF	12MO-3-4TTF	12	1/4	72,0	36,0	22,3	25,9	13/16
12M-FBT-3TTF	12MO-3TTF	12	3/8	72,0	36,0	22,4	25,9	13/16
12M-FBT-8TTF	12MO-3-8TTF	12	1/2	77,6	38,8	28,5	28,7	1
16M-FBT-TTF	16MO-3TTF	16	1/2	77,6	38,8	28,4	28,7	1

Union For Fractional Tube



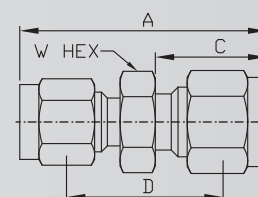
Unit= mm

NANOPURE PART NO.	INTER CHANGES	INCHES				
		TUBE O.D.	A	C	D	W HEX
2-UN	200-6	1/8	1.39	0.60	0.88	7/16
3-UN	300-6	3/16	1.48	0.64	0.95	7/16
4-UN	400-6	1/4	1.62	0.70	1.03	1/2
5-UN	500-6	5/16	1.70	0.73	1.11	9/16
6-UN	600-6	3/8	1.77	0.76	1.19	5/8
8-UN	810-6	1/2	2.02	0.87	1.22	13/16
10-UN	1010-6	5/8	2.05	0.87	1.25	15/16
12-UN	1210-6	3/4	2.11	0.87	1.31	1-1/16
14-UN	1410-6	7/8	2.18	0.87	1.38	1-3/8
16-UN	1610-6	1	2.57	1.05	1.59	1-3/8

Union For Metric Tube

NANOPURE PART NO.	INTER CHANGES	MILLIMETERS				
		TUBE O.D	A	C	D	W HEX
3MO-UN	3MO-6	3	35,3	15,3	22,1	12,0
4MO-UN	4MO-4	4	37,4	16,1	24,2	12,0
6MO-UN	6MO-6	6	41,2	17,7	26,2	14,0
8MO-UN	8MO-6	8	43,2	18,6	28,2	15,0
10MO-UN	10MO-6	10	46,2	19,5	31,0	18,0
12MO-UN	12MO-6	12	51,2	22,0	31,0	22,0
14MO-UN	14MO-6	14	52,0	22,0	31,8	24,0
15MO-UN	15MO-6	15	52,0	22,0	31,8	24,0
16MO-UN	16MO-6	16	52,0	22,0	31,8	24,0
18MO-UN	18MO-6	18	53,5	22,0	33,3	27,0
20MO-UN	20MO-6	20	55,0	22,0	34,8	30,0
22MO-UN	22MO-6	22	55,0	22,0	34,8	30,0
25MO-UN	25MO-6	25	65,1	26,5	40,5	35,0

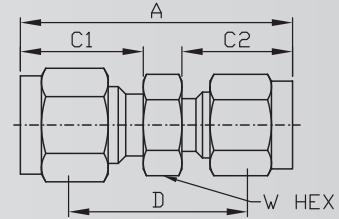
Conversion Union Metric Tube To Inch Tube



Unit= mm

NANOPURE PART NO.	INTER CHANGES	TUBE O.D.		MILLIMETERS				
		T1	T2	A	C1	C2	D	W HEX
3MO-UN-2	3MO-6-2	3	1/8	36,3	15,3	15,3	22,6	12,0
4MO-UN-2	4MO-6-2	4	1/8	36,5	16,1	15,3	23,6	12,0
4MO-UN-4	4MO-6-4	4	1/4	39,3	16,1	17,7	26,4	14,0
6MO-UN-2	6MO-6-2	6	1/8	38,5	17,7	15,3	24,6	14,0
6MO-UN-4	6MO-6-4	6	1/4	41,1	17,7	17,7	25,9	14,0
6MO-UN-5	6MO-6-5	6	5/16	42,3	17,7	18,8	27,2	14,0
8MO-UN-4	8MO-6-4	8	1/4	42,3	18,6	17,7	27,2	15,0
8MO-UN-6	8MO-6-6	8	6	44,0	18,6	19,3	29,1	15,0
10MO-UN-2	10MO-6-2	10	1/8	41,8	19,5	15,3	27,9	18,0
10MO-UN-4	10MO-6-4	10	1/4	44,5	19,5	17,7	29,2	18,0
10MO-UN-6	10MO-6-6	10	3/8	46,0	19,5	19,3	30,7	18,0
12MO-UN-6	12MO-6-6	12	3/8	48,4	22,0	19,3	30,7	22,0
12MO-UN-8	12MO-6-8	12	1/2	51,1	22,0	21,8	31,0	22,0
15MO-UN-8	15MO-6-8	15	1/2	52,0	22,0	21,8	32,0	24,0
16MO-UN-6	16MO-6-6	16	3/8	52,0	22,0	19,3	34,3	24,0
18MO-UN-12	18MO-6-12	18	3/4	53,5	22,0	21,8	33,5	27,0

Reducing Union For Fractional Tube



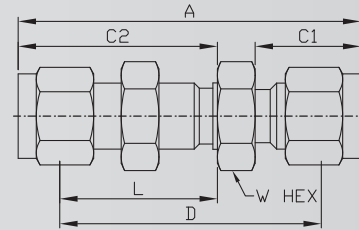
Unit= mm

NANOPURE PART NO.	INTER CHANGES	INCHES						
		T ₁ TUBE O.D.	T ₂ TUBE O.D.	A	D	C1	C2	W HEX
3-RU-2	300-6-2	3/16	1/8	1.44	0.92	0.64	0.60	7/16
4-RU-2	400-6-2	1/4	1/8	1.52	0.97	0.70	0.60	1/2
4-RU-3	400-6-3	1/4	3/16	1.55	1.00	0.70	0.64	1/2
5-RU-2	500-6-2	5/16	1/8	1.58	1.03	0.73	0.60	9/16
5-RU-4	500-6-4	5/16	1/4	1.67	1.08	0.73	0.70	9/16
6-RU-2	600-6-2	3/8	1/8	1.61	1.06	0.76	0.60	5/8
6-RU-4	600-6-4	3/8	1/4	1.71	1.13	0.76	0.70	5/8
6-RU-5	600-6-5	3/8	5/16	1.75	1.16	0.76	0.73	5/8
8-RU-2	810-6-2	1/2	1/8	1.75	1.09	0.87	0.60	13/16
8-RU-4	810-6-4	1/2	1/4	1.85	1.16	0.87	0.70	13/16
8-RU-6	810-6-6	1/2	3/8	1.91	1.22	0.87	0.76	13/16
10-RU-6	1010-6-6	5/8	3/8	1.94	1.25	0.87	0.76	15/16
10-RU-8	1010-6-8	5/8	1/2	2.05	1.25	0.87	0.87	15/16
12-RU-4	1210-6-4	3/4	1/4	1.95	1.25	0.87	0.76	1-1/16
12-RU-6	1210-6-6	3/4	3/8	2.00	1.31	0.87	0.76	1-1/16
12-RU-8	1210-6-8	3/4	1/2	2.11	1.31	0.87	0.87	1-1/16
12-RU-10	1210-6-10	3/4	5/8	2.11	1.31	0.87	0.87	1-1/16
16-RU-8	1610-6-8	1	1/2	2.39	1.50	1.05	0.87	1-3/8
16-RU-12	1610-6-12	1	3/4	2.39	1.50	1.05	0.87	1-3/8

Reducing Union For Metric Tube

NANOPURE PART NO.	INTER CHANGES	MILLIMETERS						
		T ₁ TUBE O.D.	T ₂ TUBE O.D.	A	C1	C2	D	W HEX
3MO-RU-2MO	3MO-6-2M	3	2	35,8	15,3	15,3	22,6	12,0
6MO-RU-2MO	6MO-6-2M	6	2	38,7	17,7	15,3	24,6	14,0
6MO-RU-3MO	6MO-6-3M	6	3	38,7	17,7	15,3	24,6	14,0
6MO-RU-4MO	6MO-6-4M	6	4	39,5	17,7	16,1	25,4	14,0
8MO-RU-6MO	8MO-6-6M	8	6	42,4	18,6	17,7	27,4	15,0
10MO-RU-6MO	10MO-6-6M	10	6	44,5	19,5	17,7	29,4	18,0
10MO-RU-8MO	10MO-6-8M	10	8	44,5	19,5	18,6	29,4	18,0
12MO-RU-8MO	12MO-6-6M	12	6	47,0	22,0	17,7	29,4	22,0
12MO-RU-8MO	12MO-6-8M	12	8	47,8	22,0	18,6	30,2	22,0
12MO-RU-10MO	12MO-6-10M	12	10	48,7	22,0	19,5	31,0	22,0
16MO-RU-10MO	16MO-6-10M	16	10	49,5	22,0	19,5	31,8	24,0
16MO-RU-12MO	16MO-6-12M	16	12	52,0	22,0	22,0	31,8	24,0
18MO-RU-12MO	18MO-6-12M	18	12	53,5	22,0	22,0	33,3	27,0
25MO-RU-18MO	25MO-6-18M	25	18	60,5	26,5	22,0	38,1	35,0
25MO-RU-20MO	25MO-6-20M	25	20	62,3	26,5	22,0	39,9	35,0

Bulkhead Union For Fractional Tube



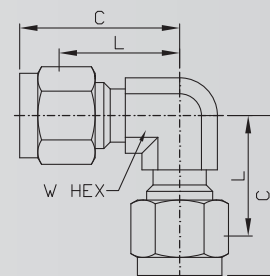
Unit= mm

NANOPURE PART NO.	INTER CHANGES	INCHES								
		TUBE O.D.	A	C ₁	C ₂	D	L	W HEX	BULKHEAD HOLE DRILL SIZE	MAXIMUM BULKHEAD THICKNESS
2-BU-2	200-61	1/8	2.02	0.60	1.23	1.50	0.97	1/2	21/64	1/2
3-BU-3	300-61	3/16	2.11	0.64	1.26	1.59	1.00	9/16	25/64	1/2
4-BU-2	400-61-2	1/4	2.17	0.70	1.23	1.03	0.97	5/8	21/64	1/2
4-BU-4	400-61	1/4	2.27	0.70	1.31	1.69	1.02	5/8	29/64	17/32
5-BU-5	500-61	5/16	2.40	0.73	1.42	1.81	1.12	11/16	33/64	9/16
6-BU-6	600-61	3/8	2.46	0.76	1.44	1.88	1.15	3/4	37/64	9/16
8-BU-8	810-61	1/2	2.80	0.87	1.65	2.00	1.25	15/16	49/64	19/32
10-BU-10	1010-61	5/8	2.86	0.87	1.68	2.06	1.28	1-1/16	57/64	19/32
12-BU-12	1210-61	3/4	3.11	0.87	1.87	2.31	1.47	1-3/16	1-1/64	25/32
14-BU-14	1410-61	7/8	3.33	0.87	2.09	2.53	1.69	1-3/8	1-9/64	15/16
16-BU-16	1610-61	1	3.78	1.05	2.27	2.81	1.78	1-5/8	1-21/64	15/16

Bulkhead Union For Metric Tube

NANOPURE PART NO.	INTER CHANGES	MILLIMETERS								
		TUBE O.D.	A	C ₁	C ₂	D	L	W HEX	BULKHEAD HOLE DRILL SIZE	MAXIMUM BULKHEAD THICKNESS
3MO-BU-3	3MO-61	3	51,3	15,3	31,2	38,2	24,6	14,0	8,3	12,7
4MO-BU-4	4MO-61	4	53,7	16,1	32,0	40,5	25,4	14,0	9,9	12,7
6MO-BU-6	6MO-61	6	57,9	17,7	33,7	42,9	26,2	16,0	11,5	10,2
8MO-BU-8	8MO-61	8	61,0	18,6	36,0	46,0	28,5	18,0	13,1	11,2
10MO-BU-10	10MO-61	10	63,6	19,5	37,0	48,4	29,4	22,0	16,3	11,2
12MO-BU-12	12MO-61	12	71,0	22,0	41,9	50,8	31,8	24,0	19,5	12,7
15MO-BU-15	15MO-61	15	72,5	22,0	42,6	52,3	32,5	27,0	22,5	12,7
16MO-BU-16	16MO-61	16	72,6	22,0	42,6	52,4	32,5	27,0	22,5	12,7
18MO-BU-18	18MO-61	18	78,9	22,0	47,4	58,7	37,3	30,0	26,0	16,8
20MO-BU-20	20MO-61	20	88,2	22,0	51,0	68,0	40,9	35,0	29,0	19,0
25MO-BU-25	25MO-61	25	95,8	26,5	54,4	71,4	42,2	41,0	33,8	24,0

Union Elbow For Fractional Tube



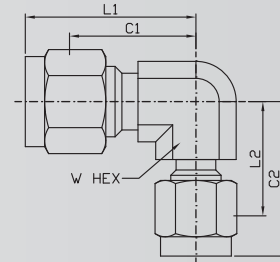
Unit= mm

NANOPURE PART NO.	INTER CHANGES	INCHES			
		TUBE O.D.	C	L	W HEX
2-UE	200-9	1/8	0.88	0.62	3/8
3-UE	300-9	3/16	1.00	0.74	1/2
4-UE	400-9	1/4	1.06	0.77	1/2
5-UE	500-9	5/16	1.13	0.84	9/16
6-UE	600-9	3/8	1.20	0.91	5/8
8-UE	810-9	1/2	1.42	1.02	13/16
10-UE	1010-9	5/8	1.50	1.10	15/16
12-UE	1210-9	3/4	1.57	1.17	1-1/16
14-UE	1410-9	7/8	1.76	1.36	1-3/8
16-UE	1610-9	1	1.93	1.45	1-3/8

Union Elbow For Metric Tube

NANOPURE PART NO.	INTER CHANGES	MILLIMETERS			INCH
		TUBE O.D.	C	L	W HEX
3MO-UE	3MO-9	3	22,3	15,7	3/8
4MO-UE	4MO-9	4	25,4	18,8	1/2
6MO-UE	6MO-9	6	27,0	19,6	1/2
8MO-UE	8MO-9	8	28,8	21,3	9/16
10MO-UE	10MO-9	10	31,5	23,9	11/16
12MO-UE	12MO-9	12	36,0	25,9	13/16
14MO-UE	14MO-9	14	38,1	28,0	15/16
15MO-UE	15MO-9	15	38,0	27,9	15/16
16MO-UE	16MO-9	16	38,0	27,9	15/16
18MO-UE	18MO-9	18	39,8	29,7	1-1/16
20MO-UE	20MO-9	20	44,6	34,5	1-3/8
22MO-UE	22MO-9	22	44,6	34,5	1-3/8
25MO-UE	25MO-9	25	49,1	36,8	1-3/8

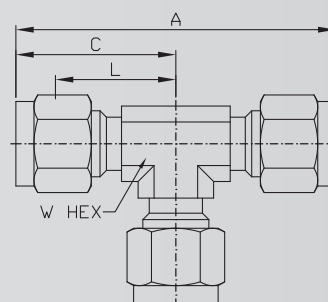
Drop Size Elbows For Fractional Tube



Unit= mm

NANOPURE PART NO.	INTER CHANGES	INCHES					
		TUBE O.D.	L ₁	C ₁	L ₂	C ₂	W HEX
3-UE-2	300-9-2	3/16-1/8	0.74	1.01	0.70	0.96	1/2
4-UE-2	400-9-2	1/4-1/8	0.77	1.06	0.70	0.96	1/2
5-UE-2	500-9-2	5/16-1/8	0.88	1.17	0.78	1.04	5/8
5-UE-4	500-9-4	5/16-1/4	0.88	1.17	0.85	1.14	5/8
6-UE-2	600-9-2	3/8-1/8	0.91	1.20	0.78	1.04	5/8
6-UE-4	600-9-4	3/8-1/4	.91	1.20	.85	1.17	5/8
6-UE-5	600-9-5	3/8-5/16	.91	1.20	.88	1.17	5/8
8-UE-4	810-9-4	1/2-1/4	1.02	1.42	.96	1.25	13/16
8-UE-5	810-9-5	1/2-5/16	1.02	1.42	.99	1.28	13/16
8-UE-6	810-9-6	1/2-3/8	1.02	1.42	1.02	1.31	13/16
10-UE-6	1010-9-6	5/8-3/8	1.10	1.50	1.10	1.39	15/16
10-UE-8	1010-9-8	5/8-1/2	1.10	1.50	1.10	1.50	15/16
12-UE-4	1210-9-4	3/4-1/4	1.16	1.56	1.10	1.39	1-1/16
12-UE-6	1210-9-6	3/4-3/8	1.16	1.56	1.16	1.45	1-1/16
12-UE-8	1210-9-8	3/4-1/2	1.16	1.56	1.16	1.56	1-1/16
14-UE-4	1410-9-4	7/8-1/4	1.36	1.76	1.30	1.59	1-3/8
16-UE-8	1610-9-8	1-1/2	1.45	1.94	1.36	1.76	1-5/16
16-UE-12	1610-9-12	1-3/4	1.45	1.94	1.36	1.76	1-3/8

Union Tee For Fractional Tube



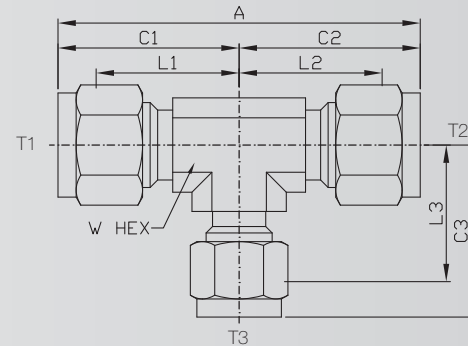
Unit= mm

NANOPURE PART NO.	INTER CHANGES	INCHES				
		TUBE O.D.	A	C	L	W HEX
2-UT	200-3	1/8	1.76	.88	0.62	3/8
3-UT	300-3	3/16	1.96	0.96	0.70	7/16
4-UT	400-3	1/4	2.12	1.06	0.77	1/2
5-UT	500-3	5/16	2.34	1.17	0.88	5/8
6-UT	600-3	3/8	2.40	1.20	0.91	5/8
8-UT	810-3	1/2	2.84	1.42	1.02	13/16
10-UT	1010-3	5/8	3.06	1.53	1.13	1
12-UT	1210-3	3/4	3.14	1.57	1.16	1-1/16
14-UT	1410-3	7/8	3.52	1.76	1.36	1-3/8
16-UT	1610-3	1	3.86	1.93	1.45	1-3/8

Union Tee For Metric Tube

NANOPURE PART NO.	INTER CHANGES	MILLIMETERS				INCH
		TUBE O.D.	A	C	L	W HEX
3MO-UT	3MO-3	3	44,7	22,3	15,7	3/8
4MO-UT	4MO-3	4	50,8	25,4	18,8	1/2
6MO-UT	6MO-3	6	53,9	27,0	19,6	1/2
8MO-UT	8MO-3	8	59,7	29,9	22,4	5/8
10MO-UT	10MO-3	10	63,0	31,5	23,9	11/16
12MO-UT	12MO-3	12	72,0	36,0	25,9	13/16
14MO-UT	14MO-3	14	77,6	38,8	28,7	1
15MO-UT	15MO-3	15	77,6	38,8	28,7	1
16MO-UT	16MO-3	16	77,6	38,8	28,7	1
18MO-UT	18MO-3	18	79,5	38,8	29,7	1-1/16
20MO-UT	20MO-3	20	89,3	44,6	34,5	1-3/8
22MO-UT	22MO-3	22	89,3	44,6	34,5	1-3/8
25MO-UT	25MO-3	25	98,3	49,1	36,8	1-3/8

R-Tee

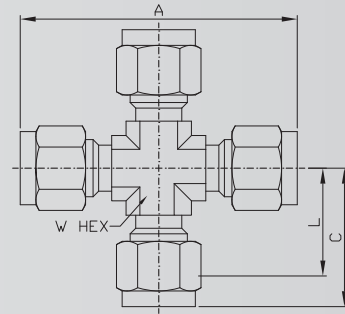


Unit= mm

NANOPURE PART NO.	INTER CHANGES	INCHES										
		T ₁ TUBE O.D.	T ₂ TUBE O.D.	T ₃ TUBE O.D.	A	L ₁	C ₁	L ₂	C ₂	L ₃	C ₃	W HEX
4-UT-4-2	400-3-4-2	1/4	1/4	1/8	2.10	.76	1.05	.76	1.05	.70	.96	1/2
6-UT-6-2	600-3-6-4	3/8	3/8	1/2	2.40	.91	1.20	.91	1.20	.85	1.14	5/8
6-UT-6-4	600-3-4-6	3/8	3/8	1/4	2.34	.91	1.20	.85	1.14	.91	1.20	5/8
8-UT-8-4	810-3-8-4	1/2	1/4	1/4	2.84	1.02	1.42	1.02	1.42	1.02	1.31	13/16
8-UT-8-6	810-3-6-8	1/2	3/8	1/2	2.73	1.02	1.42	1.02	1.31	1.02	1.42	13/16
10-UT-10-6	1010-3-10-6	5/8	5/8	3/8	3.06	1.13	1.53	1.13	1.53	1.13	1.53	7/8
10-UT-10-8	1010-3-10-8	5/8	5/8	1/2	3.06	1.13	1.53	1.13	1.53	1.13	1.53	7/8
10-UT-8-8	1010-3-8-8	5/8	1/2	1/2	3.06	1.13	1.53	1.13	1.53	1.13	1.53	7/8
10-UT-8-6	1010-3-8-6	5/8	1/2	3/8	3.06	1.13	1.53	1.13	1.53	1.13	1.42	7/8
10-UT-6-6	1010-3-6-6	5/8	3/8	3/8	2.95	1.13	1.53	1.13	1.42	1.13	1.42	7/8
10-UT-6-8	1010-3-6-8	5/8	3/8	1/2	2.95	1.13	1.53	1.13	1.42	1.13	1.53	7/8
12-UT-12-10	1210-3-12-10	3/4	3/4	5/8	3.12	1.16	1.56	1.16	1.56	1.16	1.56	1-1/16
12-UT-12-8	1210-3-12-8	3/4	3/4	1/2	3.12	1.16	1.56	1.16	1.56	1.16	1.56	1-1/16
12-UT-12-6	1210-3-12-6	3/4	3/4	3/8	3.12	1.16	1.56	1.16	1.56	1.16	1.45	1-1/16
12-UT-12-4	1210-3-12-4	3/4	3/4	1/4	3.12	1.16	1.56	1.16	1.56	1.09	1.38	1-1/16
12-UT-10-10	1210-3-10-10	3/4	5/8	5/8	3.12	1.16	1.56	1.16	1.56	1.16	1.56	1-1/16
12-UT-8-8	1210-3-8-8	3/4	1/2	1/2	3.12	1.16	1.56	1.16	1.56	1.16	1.56	1-1/16
12-UT-6-6	1210-3-6-6	3/4	3/8	3/8	3.01	1.16	1.56	1.16	1.45	1.16	1.45	1-1/16
12-UT-10-8	1210-3-10-8	3/4	5/8	1/2	3.12	1.16	1.56	1.16	1.56	1.16	1.56	1-1/16
12-UT-10-6	1210-3-10-6	3/4	5/8	3/8	3.12	1.16	1.56	1.16	1.56	1.16	1.45	1-1/16
12-UT-8-6	1210-3-8-6	3-4	1/2	3/8	3.12	1.16	1.56	1.16	1.56	1.16	1.45	1-1/16
14-UT-14-6	1410-3-14-6	7/8	7/8	3/8	3.52	1.36	1.76	1.36	1.76	1.36	1.65	1-3/8
14-UT-14-4	1410-3-14-4	7/8	7/8	1/4	3.52	1.36	1.76	1.36	1.76	1.30	1.59	1-3/8

NANOPURE PART NO.	INTER CHANGES	INCHES										
		T ₁ TUBE O.D.	T ₂ TUBE O.D.	T ₃ TUBE O.D.	A	L ₁	C ₁	L ₂	C ₂	L ₃	C ₃	W HEX
14-UT-12-12	1410-3-12-12	7/8	3/4	3/4	3.52	1.36	1.76	1.36	1.76	1.36	1.76	1-3/8
14-UT-12-10	1410-3-12-8	7/8	3/4	1/2	3.52	1.36	1.76	1.36	1.76	1.36	1.76	1-3/8
14-UT-12-6	1410-3-12-6	7/8	3/4	3/8	3.52	1.36	1.76	1.36	1.76	1.36	1.65	1-3/8
14-UT-10-6	1410-3-10-6	7/8	5/8	3/8	3.52	1.36	1.76	1.36	1.76	1.36	1.65	1-3/8
14-UT-8-12	1410-3-8-12	7/8	1/2	3/4	3.52	1.36	1.76	1.36	1.76	1.36	1.76	1-3/8
16-UT-16-12	1610-3-16-12	1	1	3/4	3.88	1.45	1.94	1.45	1.94	1.36	1.76	1-3/8
16-UT-16-10	1610-3-16-10	1	1	5/8	3.88	1.45	1.94	1.45	1.94	1.36	1.76	1-3/8
16-UT-16-8	1610-3-16-8	1	1	1/2	3.88	1.45	1.94	1.45	1.94	1.36	1.76	1-3/8
16-UT-16-10	1610-3-16-6	1	1	3/8	3.88	1.45	1.94	1.45	1.94	1.36	1.65	1-3/8
16-UT-16-4	1610-3-16-4	1	1	1/4	3.88	1.45	1.94	1.45	1.94	1.30	1.59	1-3/8
16-UT-12-16	1610-3-12-16	1	3/4	1	3.70	1.45	1.94	1.36	1.76	1.45	1.94	1-3/8
16-UT-14-14	1610-3-14-14	1	7/8	7/8	3.70	1.45	1.94	1.36	1.76	1.36	1.76	1-3/8
16-UT-14-12	1610-3-14-12	1	7/8	3/4	3.70	1.45	1.94	1.36	1.76	1.36	1.76	1-3/8
16-UT-14-8	1610-3-14-8	1	7/8	1/2	3.70	1.45	1.94	1.36	1.76	1.36	1.76	1-3/8
16-UT-14-6	1610-3-14-6	1	7/8	3/8	3.70	1.45	1.94	1.36	1.76	1.36	1.65	1-3/8
16-UT-14-4	1610-3-14-4	1	7/8	1/4	3.70	1.45	1.94	1.36	1.76	1.30	1.59	1-3/8
16-UT-16-14	1610-3-16-14	1	1	7/8	3.88	1.45	1.94	1.45	1.94	1.36	1.76	1-3/8
16-UT-12-10	1610-3-12-10	1	3/4	5/8	3.70	1.45	1.94	1.36	1.76	1.36	1.76	1-3/8
16-UT-12-8	1610-3-12-8	1	3/4	1/2	3.70	1.45	1.94	1.36	1.76	1.36	1.76	1-3/8
16-UT-10-6	1610-3-10-6	1	5/8	3/8	3.70	1.45	1.94	1.36	1.76	1.36	1.65	1-3/8
16-UT-8-16	1610-3-8-16	1	1/2	1	3.70	1.45	1.94	1.36	1.76	1.45	1.94	1-3/8
16-UT-8-8	1610-3-8-8	1	1/2	1/2	3.70	1.45	1.94	1.36	1.76	1.36	1.76	1-3/8
16-UT-8-6	1610-3-8-6	1	1/2	3/8	3.70	1.45	1.94	1.36	1.76	1.36	1.65	1-3/8
16-UT-8-4	1610-3-8-4	1	1/2	1/4	3.70	1.45	1.94	1.36	1.76	1.30	1.59	1-3/8
16-UT-6-6	1610-3-6-6	1	3/8	3/8	3.59	1.45	1.94	1.36	1.65	1.36	1.65	1-3/8

Union Cross For Fractional Tube



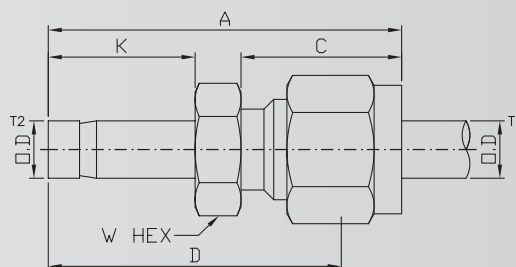
Unit= mm

NANOPURE PART NO.	INTER CHANGES	INCHES				
		TUBE O.D.	A	C	L	W HEX
2-UC	200-4	1/8	1.76	0.98	0.62	7/16
3-UC	300-4	3/16	1.83	0.96	0.70	7/16
4-UC	400-4	1/4	2.12	1.06	0.76	1/2
5-UC	500-4	5/16	2.34	1.17	0.88	5/8
6-UC	600-4	3/8	2.40	1.20	0.91	5/8
8-UC	810-4	1/2	2.84	1.42	1.02	13/16
10-UC	1010-4	5/8	3.06	1.53	1.13	1-1/16
12-UC	1210-4	3/4	3.12	1.57	1.16	1-1/16
14-UC	1410-4	7/8	3.52	1.76	1.36	1-5/16
16-UC	1610-4	1	3.86	1.93	1.45	1-5/16

Union Cross For Metric Tube

NANOPURE PART NO.	INTER CHANGES	INCHES				INCH
		TUBE O.D.	A	C	L	W HEX
3MO-UC	3MO-4	3	44,7	22,3	15,7	7/16
4MO-UC	4MO-4	4	50,8	25,4	18,8	1/2
6MO-UC	6MO-6	6	53,9	27,0	19,6	1/2
8MO-UC	8MO-8	8	59,7	29,9	22,4	5/8
10MO-UC	10MO-10	10	67,0	33,5	25,9	13/16
12MO-UC	12MO-12	12	72,0	36,0	25,9	13/16
16MO-UC	16MO-16	16	74,0	37,0	26,9	15/16
18MO-UC	18MO-18	18	76,6	38,3	28,2	1-1/16

Tube End Reducer For Fractional Tube



Unit= mm

NANOPURE PART NO.	INTER CHANGES	INCHES							
		T ₁ TUBE O.D.	T ₂ TUBE O.D.	A	C	D	K	W HEX	BORE
2-RD-2	200-R-2	1/8	1/8	1.34	0.43	1.09	0.54	7/16	0.07
2-RD-3	200-R-3	1/8	3/16	1.35	0.60	1.09	0.58	7/16	0.09
2-RD-4	200-R-4	1/8	1/4	1.42	0.60	1.16	0.63	7/16	0.09
2-RD-6	200-R-6	1/8	3/8	1.48	0.60	1.22	0.69	7/16	0.09
2-RD-8	200-R-8	1/8	1/2	1.74	0.60	1.48	0.91	9/16	0.09
3-RD-2	300-R-2	3/16	1/8	1.37	0.63	1.11	0.53	7/16	0.08
3-RD-4	300-R-4	3/16	1/4	1.46	0.63	1.20	0.63	7/16	0.13
4-RD-2	400-R-2	1/4	1/8	1.45	0.70	1.16	0.53	1/2	0.08
4-RD-3	400-R-3	1/4	3/16	1.48	0.60	1.19	0.56	1/2	0.12
4-RD-4	400-R-4	1/4	1/4	1.54	0.70	1.25	0.63	1/2	0.19
4-RD-5	400-R-5	1/4	5/16	1.57	0.70	1.28	0.66	1/2	0.19
4-RD-6	400-R-6	1/4	3/8	1.60	0.70	1.31	0.69	1/2	0.19
4-RD-8	400-R-8	1/4	1/2	1.82	0.70	1.53	0.91	9/16	0.19
4-RD-10	400-R-10	1/4	5/8	1.89	0.70	1.60	0.97	11/16	0.19
4-RD-12	400-R-12	1/4	3/4	1.88	0.70	1.59	0.97	13/16	0.19
5-RD-6	500-R-6	5/16	3/8	1.65	0.73	1.36	0.69	9/16	0.25
5-RD-8	500-R-8	5/16	1/2	1.87	0.73	1.58	0.91	9/16	0.25
6-RD-4	600-R-4	3/8	1/4	1.63	0.76	1.34	0.63	5/8	0.19
6-RD-6	600-R-6	3/8	3/8	1.70	0.76	1.41	0.69	5/8	0.28
6-RD-8	600-R-8	3/8	1/2	1.91	0.76	1.62	0.91	5/8	0.28
6-RD-10	600-R-10	3/8	5/8	1.98	0.76	1.69	0.97	11/16	0.28
6-RD-12	600-R-12	3/8	3/4	1.98	0.76	1.69	0.97	13/16	0.28
8-RD-4	810-R-4	1/2	1/4	1.77	0.87	1.37	0.63	13/16	0.19
8-RD-6	810-R-6	1/2	3/8	1.84	0.87	1.44	0.69	13/16	0.19
8-RD-10	810-R-10	1/2	5/8	2.12	0.87	1.72	0.97	13/16	0.41
8-RD-12	810-R-12	1/2	3/4	2.12	0.87	1.72	0.97	13/16	0.41
8-RD-16	810-R-16	1/2	1	2.37	0.87	1.97	1.22	1-1/16	0.41
10-RD-12	1010-R-12	5/8	3/4	2.15	0.87	1.75	0.97	15/16	0.50
10-RD-14	1010-R-14	5/8	7/8	2.21	0.87	1.81	1.03	15/16	0.50
10-RD-16	1010-R-16	5/8	1	2.40	0.87	2.00	1.22	1-1/16	0.50
12-RD-8	1210-R-8	3/4	1/2	2.15	0.87	1.75	0.91	1-1/16	0.39
12-RD-16	1210-R-16	3/4	1	2.46	0.87	2.06	1.22	1-1/16	0.63
16-RD-24	1610-R-24	1	1-1/2	3.519	1.05	3.03	2.05	1-5/8	0.88

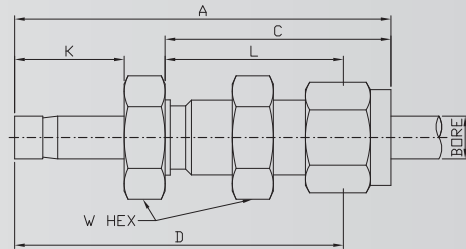
Tube End Converter For Metric Tube

NANOPURE PART NO.	INTER CHANGES	TUBE O.D.		MILLIMETERS					
		T ₁ INCH	T ₂ MM	A	C	D	K	W HEX	BORE
3MO-RD-2	3MO-R-2	3	1/8	34,3	15,3	27,7	13,5	12,0	1,4
3MO-RD-4	3MO-R-4	3	1/4	36,1	15,3	29,5	16,0	12,0	4,8
6MO-RD-4	6MO-R-4	6	1/4	39,3	17,7	31,8	16,0	14,0	4,8
6MO-RD-5	6MO-R-5	6	5/16	40,0	17,7	32,5	16,8	14,0	6,4
6MO-RD-6	6MO-R-6	6	3/8	40,8	17,7	33,3	17,5	14,0	7,1
6MO-RD-8	6MO-R-8	6	1/2	46,4	17,7	38,9	23,1	14,0	9,9
8MO-RD-6	8MO-R-6	8	3/8	42,0	18,6	34,5	17,5	15,0	7,1
8MO-RD-8	8MO-R-8	8	1/2	47,5	18,6	40,1	23,1	15,0	9,9
10MO-RD-6	10MO-R-6	10	3/8	44,4	19,5	36,8	17,5	18,0	7,1
10M-RD-8	10MO-R-8	10	1/2	47,6	19,5	41,4	23,1	18,0	9,9
12MO-RD-8	12MO-R-8	12	1/2	52,3	22,0	42,2	23,1	22,0	9,9
12MO-RD-12	12MO-R-12	12	3/4	53,8	22,0	43,7	24,6	22,0	15,1
18MO-RD-12	18MO-R-12	18	3/4	57,5	22,0	47,5	24,6	27,0	15,1

Tube End Reducer For Metric Tube

NANOPURE PART NO.	INTER CHANGES	MILLIMETERS								
		TUBE O.D.		A	C	D	K	Q	W HEX	BORE
		T ₁	T ₂							
3MO-RD-4MO	3MO-R-4M	3	4	35,0	15,3	28,4	14,3	1,0	12,0	2,0
3MO-RD-6MO	3MO-R-6M	3	6	36,1	15,3	29,5	15,9	1,0	12,0	2,4
3MO-RD-10MO	3MO-R-10M	3	10	38,6	15,3	32,0	17,7	2,0	15,3	12,0
4MO-RD-6MO	4MO-R-6M	4	6	37,1	16,1	30,5	15,9	1,0	12,0	3,0
6MO-RD-3MO	6MO-R-3M	6	3	37,0	17,7	29,5	13,5	0,6	14,0	1,4
6MO-RD-6MO	6MO-R-6M	6	8	40,0	17,7	32,5	16,7	0,8	14,0	4,8
6MO-RD-10MO	6MO-R-10M	6	10	40,8	17,7	33,3	17,5	1,3	14,0	4,8
6MO-RD-12MO	6MO-R-12M	6	12	46,4	17,7	38,9	23,0	1,4	14,0	4,8
8MO-RD-6MO	8MO-R-6M	8	6	40,0	18,6	32,5	15,9	1,0	15,0	4,0
8MO-RD-10MO	8MO-R-10M	8	10	42,0	18,6	34,5	17,5	1,3	15,0	6,4
8MO-RD-12MO	8MO-R-12M	8	12	47,6	18,6	40,1	23,0	1,4	15,0	6,4
10MO-RD-6MO	10MO-R-6M	10	6	41,7	19,5	34,1	15,9	1,0	18,0	4,0
10MO-RD-6MO	10MO-R-8M	10	8	43,4	19,5	35,8	15,3	1,5	19,5	18,0
10MO-RD-12MO	10MO-R-12M	10	12	49,7	19,5	42,1	23,0	1,4	18,0	7,9
10MO-RD-15MO	10MO-R-15M	10	15	51,3	19,5	43,7	23,8	1,6	27,0	7,9
12MO-RD-6MO	12MO-R-6M	12	6	44,9	22,0	34,8	15,9	1,0	22,0	4,0
12MO-RD-10MO	12MO-R-10M	12	10	46,6	22,0	36,5	17,5	1,3	22,0	7,5
12MO-RD-16MO	12MO-R-16M	12	16	53,8	22,0	43,7	24,6	1,7	22,0	9,5
12MO-RD-16MO	12MO-R-18M	12	18	53,8	22,0	43,7	24,6	2,0	22,0	9,5
12MO-RD-20MO	12MO-R-20M	12	20	56,1	22,0	46,0	25,4	2,5	22,0	9,5
12MO-RD-25MO	12MO-R-25M	12	25	60,9	22,0	50,8	31,8	2,6	27,0	9,5
16MO-RD-12MO	16MO-R-12M	16	12	53,0	22,0	42,9	23,0	1,4	24,0	9,1
16MO-RD-18MO	16MO-R-18M	16	18	54,7	22,0	44,6	24,8	2,5	22,0	24,0
16MO-RD-20MO	16MO-R-20M	16	20	55,3	22,0	45,2	25,6	2,5	22,0	24,0
16MO-RD-25MO	16MO-R-25M	16	25	64,0	22,0	51,8	32,0	3,0	22,0	27,
18MO-RD-12MO	18MO-R-12M	18	12	54,6	22,0	44,5	23,0	1,4	27,0	9,1
18MO-RD-16MO	18MO-R-16M	18	16	56,1	22,0	46,0	24,6	1,7	27,0	12,7
18MO-RD-20MO	18MO-R-20M	18	20	57,6	22,0	47,5	25,4	2,5	27,0	15,1
18MO-RD-22MO	18MO-R-22M	18	22	56,1	22,0	46,0	26,2	2,5	27,0	15,1
18MO-RD-25MO	18MO-R-25M	18	25	62,5	22,0	52,4	31,8	2,6	27,0	15,1
20MO-RD-16MO	20MO-R-16M	20	16	57,9	22,0	47,8	24,6	1,7	27,0	12,7
20MO-RD-18MO	20MO-R-18M	20	18	57,9	22,0	47,8	24,6	2,0	30,0	13,9
25MO-RD-16MO	25MO-R-16M	25	16	63,2	26,5	51,0	24,8	2,0	26,5	35,0
25MO-RD-18MO	25MO-R-18M	25	18	63,1	26,5	50,8	24,6	2,0	35,0	14,0
25MO-RD-20MO	25MO-R-20M	25	20	64,5	26,5	52,3	25,4	2,5	35,0	15,1
20MO-RD-22MO	20MO-R-22M	20	22	57,7	22,0	47,6	26,2	2,5	30,0	15,8
20MO-RD-25MO	20MO-R-25M	20	25	64,2	22,0	54,1	31,8	2,6	30,0	15,8

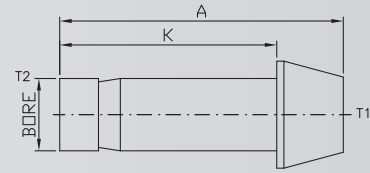
Tube End Bulkhead Adapter For Fractional Tube



Unit= mm

NANOPURE PART NO.	INTER CHANGES	INCHES							
		TUBE O.D.	A	C	L	K	D	BORE	W HEX
2-BAD-2	200-R1-2	1/8	1.95	1.23	.97	0.53	1.69	0.093	1/2
4-BAD-4	400-R1-4	1/4	2.20	1.31	1.02	0.63	1.91	0.187	5/8
6-BAD-6	600-R1-6	3/8	2.42	1.44	1.15	0.69	2.13	0.281	3/4
8-BAD-8	810-R1-8	1/2	2.87	1.65	1.25	0.91	2.47	0.406	15/16

Port Connector For Fractional Tube



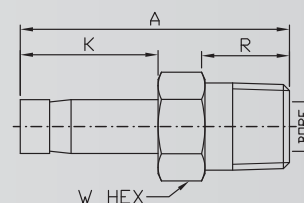
Unit= mm

NANOPURE PART NO.	INTER CHANGES	INCHES				
		TUBE O.D.		A	K	BORE
		T ₁	T ₂			
2-PO-2	201-PC	1/8	1/8	0.95	0.54	.078
3-PO-3	301-PC	3/16	3/16	.981	0.67	0.116
4-PO-2	401-PC-2	1/4	1/8	1.05	0.54	.078
4-PO-4	401-PC	1/4	1/4	1.07	0.76	.156
6-PO-2	601-PC-2	3/8	1/8	1.09	0.54	.031
6-PO-4	601-PC-4	3/8	1/4	1.15	0.64	0.156
6-PO-6	601-PC	3/8	3/8	1.16	0.84	0.281
8-PO-4	811-PC-4	1/2	1/4	1.36	0.64	0.156
8-PO-6	811-PC-6	1/2	3/8	1.40	0.72	0.281
8-PO-8	811-PC	1/2	1/2	1.59	1.11	0.375
12-PO-8	1211-PC-8	3/4	1/2	1.72	0.91	0.375
12-PO-12	1211-PC	3/4	3/4	1.65	1.16	0.578
16-PO-16	1611-PC	1	1	2.12	1.44	0.813

Port Connector For Metric Tube

NANOPURE PART NO.	INTER CHANGES	MILLIMETERS				
		TUBE O.D.		A	K	BORE
		T ₁	T ₂			
3MO-PO	3M1-PC	3	3	22,2	15,7	1,6
6MO-PO	6M1-PC	6	6	24,6	18,7	3,0
6MO-PO-3MO	6M1-PC-3M	6	3	22,6	13,5	1,6
8MO-PO	8M1-PC	8	8	25,9	20,2	5,0
8MO-PO-6MO	8M1-PC-6M	8	6	25,5	16,1	3,0
10MO-PO	10M1-PC	10	10	26,1	20,0	6,0
10MO-PO-6MO	10M1-PC-6M	10	6	25,5	16,1	3,0
10MO-PO-6MO	12M1-PC-6M	12	6	31,2	16,1	3,0
10MO-PO-8MO	10M1-PC-8M	10	8	29,5	16,8	5,0
12MO-PO	12M1-PC	12	12	35,8	26,0	8,0
12MO-PO	16M1-PC	16	16	40,5	27,7	12,0
18MO-PO	18M1-PC	18	18	40,8	27,7	13,0
12MO-PO-8MO	12M1-PC-8M	12	8	31,4	16,8	5,0

Male Adapter To Tube



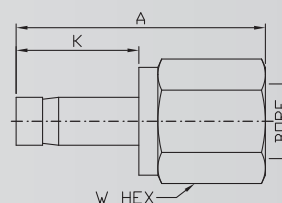
Unit= mm

NANOPURE PART NO.	INTER CHANGES	INCHES						
		TUBE O.D.	NPT PIPE THREAD	A	R	K	W HEX	BORE
2-MAD-2	2-TA-1-2	1/8	1/8	1.16	0.38	0.54	7/16	0.078
2-MAD-4	2-TA-1-4	1/8	1/4	1.38	0.56	0.54	9/16	0.078
3-MAD-2	3-TA-1-2	3/16	1/8	1.20	0.38	0.58	7/16	0.116
3-MAD-4	3-TA-1-4	3/16	1/4	1.42	0.56	0.58	9/16	0.116
4-MAD-2	4-TA-1-2	1/4	1/8	1.25	0.38	0.63	7/16	0.156
4-MAD-4	4-TA-1-4	1/4	1/4	1.46	0.56	0.63	9/16	0.156
4-MAD-6	4-TA-1-6	1/4	3/8	1.49	0.56	0.63	11/16	0.156
4-MAD-8	4-TA-1-8	1/4	1/2	1.71	0.75	0.63	7/8	0.156
5-MAD-2	5-TA-1-2	5/16	1/8	1.29	0.38	0.66	7/16	0.219
5-MAD-4	5-TA-1-4	5/16	1/4	1.50	0.56	0.66	9/16	0.219
5-MAD-6	5-TA-1-6	5/16	3/8	1.53	0.56	0.66	11/16	0.219
5-MAD-8	5-TA-1-8	5/16	1/2	1.74	0.75	0.66	7/8	0.219
6-MAD-2	6-TA-1-2	3/8	1/8	1.32	0.38	0.69	7/16	0.281
6-MAD-4	6-TA-1-4	3/8	1/4	1.53	0.56	0.69	9/16	0.281
6-MAD-6	6-TA-1-6	3/8	3/8	1.56	0.56	0.69	11/16	0.281
6-MAD-8	6-TA-1-8	3/8	1/2	1.78	0.75	0.69	7/8	0.281
8-MAD-4	8-TA-1-4	1/2	1/4	1.75	0.56	0.91	9/16	0.281
8-MAD-6	8-TA-1-6	1/2	3/8	1.78	0.56	0.91	11/16	0.375
8-MAD-8	8-TA-1-8	1/2	1/2	2.00	0.75	0.91	7/8	0.375
10-MAD-8	10-TA-1-8	5/8	1/2	2.06	0.75	0.97	7/8	0.469
12-MAD-8	12-TA-1-8	3/4	1/2	2.06	0.75	0.97	7/8	0.469
12-MAD-12	12-TA-1-12	3/4	3/4	2.06	0.75	0.97	1-1/16	0.578
12-MAD-16	12-TA-1-16	3/4	1	2.41	0.94	0.97	1-3/8	0.813
16-MAD-12	16-TA-1-12	1	3/4	2.31	0.75	1.22	1-1/16	0.813
16-MAD-16	16-TA-1-16	1	1	2.68	0.94	1.22	1-3/8	0.813

Male Adapter Male to Tube For Metric Tube

NANOPURE PART NO.	INTER CHANGES	MILLIMETERS						
		TUBE O.D.	NPT THREAD	A	K	R	W HEX	BORE
3MO-MAD-2	3-MTA-1-2	3	1/8	29,4	13,5	9,7	12,0	1,8
4MO-MAD-2	4-MTA-1-2	4	1/8	29,4	14,3	9,7	12,0	2,0
6MO-MAD-2	6-MTA-1-2	6	1/8	31,0	15,9	9,7	12,0	4,0
6MO-MAD-4	6-MTA-1-4	6	1/4	35,7	15,9	14,2	14,0	4,0
6MO-MAD-6	6-MTA-1-6	6	3/8	36,5	16,1	14,2	18,0	3,0
6MO-MAD-8	6-MTA-1-8	6	1/2	42,1	16,1	19,1	22,0	3,0
8MO-MAD-4	8-MTA-1-4	8	1/4	37,3	16,7	14,2	14,0	6,4
8MO-MAD-6	8-MTA-1-6	8	3/8	38,1	16,7	14,2	12,0	6,4
10MO-MAD-4	10-MTA-1-4	10	1/4	38,1	17,5	14,2	14,0	7,1
10MO-MAD-6	10-MTA-1-6	10	3/8	43,7	17,5	14,2	18,0	7,5
10MO-MAD-8	10-MTA-1-8	10	1/2	44,5	17,5	19,1	22,0	7,5
12MO-MAD-4	12-MTA-1-4	12	1/4	43,7	23,0	14,2	14,0	7,1
12MO-MAD-6	12-MTA-1-6	12	3/8	44,5	23,0	14,2	27,0	9,1
12MO-MAD-8	12-MTA-1-8	12	1/2	49,2	23,0	19,1	22,0	9,1
16MO-MAD-8	16-MTA-1-8	16	1/2	50,8	24,6	19,1	22,0	12,7
16MO-MAD-12	16-MTA-1-12	16	3/4	51,6	24,6	19,1	27,0	12,7
18MO-MAD-8	18-MTA-1-8	18	1/2	50,8	24,6	19,1	22,0	12,7
18MO-MAD-12	18-MTA-1-12	18	3/4	51,6	24,6	19,1	27,0	14,0
20MO-MAD-8	20-MTA-1-8	20	1/2	51,8	25,6	19,1	22,0	15,0
20MO-MAD-12	20-MTA-1-12	20	3/4	52,4	25,4	19,1	27,0	15,1
25MO-MAD-16	25-MTA-1-16	25	1	65,9	31,8	23,9	35,0	19,8

Female to Tube for Fractional Tube



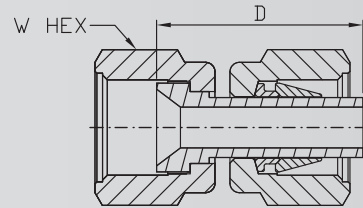
Unit= mm

NANOPURE PART NO.	INTER CHANGES	INCHES					
		TUBE O.D.	NPT PIPE THREAD	A	K	W HEX	BORE
2-FAD-2	2-TA-7-2	1/8	1/8	1.23	0.53	9/16	0.093
2-FAD-4	2-TA-7-4	1/8	1/4	1.38	0.53	3/4	0.093
3-FAD-2	3-TA-7-2	3/16	1/8	1.25	0.56	9/16	0.116
3-FAD-4	3-TA-7-4	3/16	1/4	1.42	0.56	3/4	0.116
4-FAD-2	4-TA-7-2	1/4	1/8	1.31	0.63	9/16	0.188
4-FAD-4	4-TA-7-4	1/4	1/4	1.47	0.63	3/4	0.188
4-FAD-6	4-TA-7-6	1/4	3/8	1.56	0.63	7/8	0.188
4-FAD-8	4-TA-7-8	1/4	1/2	1.80	0.63	1-1/16	0.188
5-FAD-2	5-TA-7-2	5/16	1/8	1.34	0.66	9/16	0.219
5-FAD-4	5-TA-7-4	5/16	1/4	1.50	0.66	3/4	0.219
5-FAD-6	5-TA-7-6	5/16	3/8	1.59	0.66	7/8	0.219
6-FAD-2	6-TA-7-2	3/8	1/8	1.36	0.69	9/16	0.281
6-FAD-8	6-TA-7-4	3/8	1/4	1.55	0.69	3/4	0.281
6-FAD-6	6-TA-7-6	3/8	3/8	1.59	0.69	7/8	0.281
6-FAD-8	6-TA-7-8	3/8	1/2	1.84	0.69	1-1/16	0.281
8-FAD-4	8-TA-7-4	1/2	1/4	1.72	0.91	3/4	0.391
8-FAD-6	8-TA-7-6	1/2	3/8	1.80	0.91	7/8	0.391
9-FAD-8	8-TA-7-8	1/2	1/2	2.10	0.91	1-1/16	0.390
10-FAD-6	10-TA-7-6	5/8	3/8	1.86	0.97	7/8	0.469
10-FAD-8	10-TA-7-8	5/8	1/2	2.09	0.97	1-1/16	0.469
12-FAD-8	12-TA-7-8	3/4	1/2	2.10	0.97	1-1/16	0.578
12-FAD-12	12-TA-7-12	3/4	3/4	2.16	0.97	1-1/4	0.578
12-FAD-16	12-TA-7-16	3/4	1	2.30	0.97	1-5/8	0.578
14-FAD-12	14-TA-7-12	7/8	3/4	2.22	1.02	1-5/16	0.578
16-FAD-12	16-TA-7-12	1	3/4	2.41	1.22	1-5/16	0.813
16-FAD-16	16-TA-7-16	1	1	2.54	1.22	1-5/8	0.813

Female Adapter: Female to Tube For Metric Tube

NANOPURE PART NO.	INTER CHANGES	MILLIMETERS					
		TUBE O.D.	NPT THREAD	A	K	W HEX	BORE
3MO-FAD-2	3-MTA-7-2	3	1/8	31,3	13,5	14,0	1,3
4MO-FAD-2	4-MTA-7-2	4	1/8	29,4	14,3	14,0	2,0
6MO-FAD-2	6-MTA-7-2	6	1/8	29,4	15,9	14,0	4,0
6MO-FAD-4	6-MTA-7-4	6	1/4	34,1	15,9	19,0	4,0
8MO-FAD-2	8-MTA-7-2	8	1/8	35,5	16,7	14,0	6,4
8MO-FAD-4	8-MTA-7-4	8	1/4	35,1	16,7	19,0	6,4
8MO-FAD-6	8-MTA-7-6	8	3/8	36,5	16,7	22,0	6,4
10MO-FAD-4	10-MTA-7-4	10	1/4	37,3	17,5	19,0	7,5
10MO-FAD-6	10-MTA-7-6	10	3/8	37,3	17,5	22,0	7,5
10MO-FAD-8	10-MTA-7-8	10	1/2	42,1	17,5	27,0	7,5
12MO-FAD-4	12-MTA-7-4	12	1/4	41,3	23,0	19,0	9,1
12MO-FAD-6	12-MTA-7-6	12	3/8	42,9	23,0	22,0	9,1
12MO-FAD-8	12-MTA-7-8	12	1/2	47,6	23,0	27,0	9,1
16MO-FAD-8	16-MTA-7-8	16	1/2	49,2	24,6	27,0	12,7
18MO-FAD-12	18-MTA-7-12	18	3/4	52,4	24,6	33,0	14,0
20MO-FAD-8	20-MTA-7-8	20	1/2	50,0	25,6	27,0	15,0
20MO-FAD-12	20-MTA-7-12	20	3/4	53,2	25,4	33,0	15,1
25MO-FAD-16	25-MTA-7-16	25	1	66,7	31,8	41,0	19,8

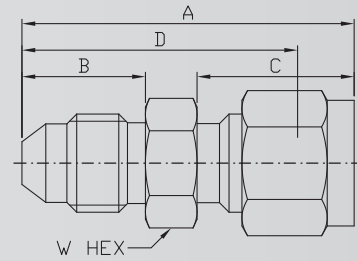
AN Thread



Unit= mm

NANOPURE PART NO.	INTER CHANGES	INCHES		
		TUBE O.D.	D	W HEX
2-AN-2F	200-A-2ANF	1/8	0.88	3/8
4-AN-4F	400-A-4ANF	1/4	0.96	9/16
6-AN-6F	600-A-6ANF	3/8	1.07	11/16
8-AN-8F	810-A-8ANF	1/2	1.37	7/8
12-AN-12F	1210-A-12ANF	3/4	1.49	1-1/4
16-AN-16F	1610-A-16ANF	1	1.80	1-1/2

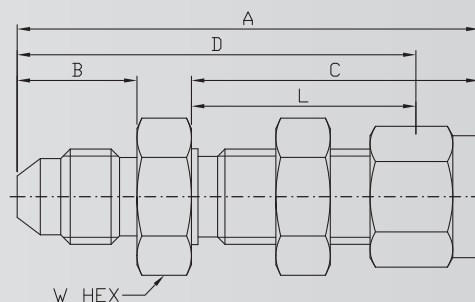
Male 37° Flare Connector For Fractional Tube



Unit= mm

NANOPURE PART NO.	INTER CHANGES	INCHES						
		TUBE O.D.	FLARE END	A	B	C	D	W HEX
2-AN-2	200-6-2AN	1/8	1/8	1.28	0.45	0.60	1.02	7/16
2-AN-4	200-6-4AN	1/8	1/4	1.39	0.55	0.60	1.13	1/2
3-AN-3	300-6-3AN	3/16	3/16	1.32	0.48	0.64	1.06	7/16
4-AN-4	400-6-4AN	1/4	1/4	1.48	0.55	0.70	1.19	1/2
5-AN-5	500-6-5AN	5/16	5/16	1.52	0.55	0.73	1.22	9/16
6-AN-4	600-6-4AN	3/8	1/4	1.56	0.55	0.76	1.27	5/8
6-AN-6	600-6-6AN	3/8	3/8	1.56	0.56	0.76	1.27	5/8
8-AN-8	810-6-8AN	1/2	1/2	1.81	0.66	0.87	1.41	13/16
10-AN-10	1010-6-10AN	5/8	5/8	1.93	0.76	0.87	1.53	15/16
12-AN-12	1210-6-12AN	3/4	3/4	2.11	0.86	0.87	1.70	1-1/8
16-AN-16	1610-6-16AN	1	1	2.43	0.91	1.05	1.94	1-3/8

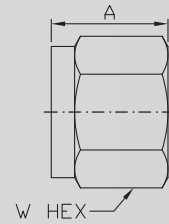
37° Flare Bulkhead Connector For Fractional Tube



Unit= mm

NANOPURE PART NO.	INTER CHANGES	INCHES							
		TUBE O.D.	FLARE END	A	D	C	L	B	W HEX
2-BAN-2	200-61-2 AN	1/8	1/8	1.91	1.65	1.23	0.97	0.45	1/2
2-BAN-4	200-61-4 AN	1/8	1/4	2.04	1.78	1.23	0.97	0.55	5/8
3-BAN-3	300-61-3 AN	3/16	3/16	1.98	1.71	1.26	1.00	0.48	9/16
4-BAN-4	400-61-4 AN	1/4	1/4	2.12	1.83	1.31	1.02	0.55	5/8
5-BAN-5	500-61-5 AN	5/16	5/16	2.21	1.92	1.41	1.12	0.55	11/16
6-BAN-2	600-61-4 AN	3/8	1/4	2.25	1.96	1.44	1.15	0.55	3/4
6-BAN-8	600-61-6 AN	3/8	3/8	2.25	1.96	1.44	.115	0.56	3/4
8-BAN-8	810-61-8 AN	1/2	1/2	2.59	2.19	1.65	1.25	0.66	15/16
10-BAN-10	1010-61-10 AN	5/8	5/8	2.74	2.34	1.68	1.28	0.76	1-1/16
12-BAN-12	1210-61-12 AN	3/4	3/4	3.11	2.71	1.87	1.47	0.86	1-3/16
16-BAN-16	1610-61-16 AN	1	1	3.65	3.16	2.27	1.78	0.91	1-9/16

Tube Nut For Fractional Tube



Unit= mm

NANOPURE PART NO.	INTER CHANGES	INCHES		
		TUBE O.D.	A	W HEX
1-NU	102-1	1/16	0.31	5/16
2-NU	202-1	1/8	0.47	7/16
3-NU	302-1	3/16	0.47	1/2
4-NU	402-1	1/4	0.50	9/16
5-NU	502-1	5/16	0.53	5/8
6-NU	602-1	3/8	0.56	11/16
8-NU	812-1	1/2	0.69	7/8
10-NU	1012-1	5/8	0.69	1
12-NU	1212-1	3/4	0.69	1-1/8
14-NU	1412-1	7/8	0.69	1-1/4
16-NU	1612-1	1	0.81	1-1/2

Tube Nut For Metric Tube

NANOPURE PART NO.	INTER CHANGES	UN THREAD	MILLIMETERS		
			TUBE O.D.	A	W HEX
2MO-NU	2M2-1	2	5/16-20	11,9	12,0
3MO-NU	3M2-1	3	5/16-20	11,9	12,0
4MO-NU	4M2-1	4	3/8-20	11,9	12,0
6MO-NU	6M2-1	6	7/16-20	12,7	14,0
8MO-NU	8M2-1	8	1/2-20	13,5	16,0
10MO-NU	10M2-1	10	5/8-20	15,1	19,0
12MO-NU	12M2-1	12	3/4-20	17,5	22,0
14MO-NU	14M2-1	14	7/8-20	17,5	25,0
15MO-NU	15M2-1	15	7/8-20	17,5	25,0
16MO-NU	16M2-1	16	7/8-20	17,5	25,0
18MO-NU	18M2-1	18	1-20	17,5	30,0
20MO-NU	20M2-1	20	1.1/8-20	17,5	32,0
22MO-NU	22M2-1	22	1.1/8-20	17,5	32,0
25MO-NU	25M2-1	25	1.5/16-20	20,6	38,0

Front Ferrule For Fractional Tube



Unit= mm

NANOPURE PART NO.	INTERCHANGES WITH	INCHESTUBE O.D.
1-FF	103-1	1/16
2-FF	203-1	1/8
3-FF	303-1	3/16
4-FF	403-1	1/4
5-FF	503-1	5/16
6-FF	603-1	3/8
8-FF	813-1	1/2
10-FF	1013-1	5/8
12-FF	1213-1	3/4
14-FF	1413-1	7/8
16-FF	1613-1	1

Front Ferrule For Metric Tube

NANOPURE PART NO.	INTERCHANGES WITH	INCHESTUBE O.D.
2MO-FF	2M3-1	2
3MO-FF	3M3-1	3
4MO-FF	4M3-1	4
6MO-FF	6M3-1	6
8MO-FF	8M3-1	8
10MO-FF	10M3-1	10
12MO-FF	12M3-1	12
14MO-FF	14M3-1	14
15MO-FF	15M3-1	15
16MO-FF	16M3-1	16
18MO-FF	18M3-1	18
20MO-FF	20M3-1	20
22MO-FF	22M3-1	22
25MO-FF	25M3-1	25

Back Ferrule For Fractional Tube



Unit= mm

NANOPURE PART NO.	INTERCHANGES WITH	INCHESTUBE O.D.
1-BF	104-1	1/16
2-BF	204-1	1/8
3-BF	304-1	3/16
4-BF	404-1	1/4
5-BF	504-1	5/16
6-BF	604-1	3/8
8-BF	814-1	1/2
10-BF	1014-1	5/8
12-BF	1214-1	3/4
14-BF	1414-1	7/8
16-BF	1614-1	1

Back Ferrule For Metric Tube

NANOPURE PART NO.	INTERCHANGES WITH	INCHESTUBE O.D.
2MO-BF	2M4-1	2
3MO-BF	3M4-1	3
4MO-BF	4M4-1	4
6MO-BF	6M4-1	6
8MO-BF	8M4-1	8
10MO-BF	10M4-1	10
12MO-BF	12M4-1	12
14MO-BF	14M4-1	14
15MO-BF	15M4-1	15
16MO-BF	16M4-1	16
18MO-BF	18M4-1	18
20MO-BF	20M4-1	20
22MO-BF	22M4-1	22
25MO-BF	25M4-1	25

Ferrule Set

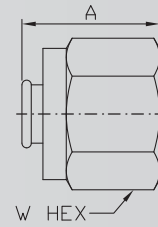


Unit= mm

NANOPURE PART NO.	T TUBE O.D. (INCHES)
2-SET	1/8
4-SET	1/4
6-SET	3/8
8-SET	1/2
12-SET	3/4
16-SET	1

NanoPure PART NO.	T TUBE O.D. (mm)
3MO-SET	3
4MO-SET	4
6MO-SET	6
8MO-SET	8
10MO-SET	10
12MO-SET	12
14MO-SET	14
15MO-SET	15
16MO-SET	16
18MO-SET	18
20MO-SET	20
22MO-SET	22
25MO-SET	25

Plug For Fractional Tube



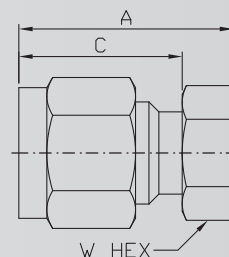
Unit= mm

NANOPURE PART NO.	INTER CHANGES	INCHES		
		TUBE O.D.	A	W HEX
1-PG	100-P	1/16	0.31	5/16
2-PG	200-P	1/8	0.47	7/16
3-PG	300-P	3/16	0.47	1/2
4-PG	400-P	1/4	0.50	9/16
5-PG	500-P	5/16	0.53	5/8
6-PG	600-P	3/8	0.56	11-16
8-PG	810-P	1/2	0.69	7/8
10-PG	1010-P	5/8	0.69	1
12-PG	1210-P	3/4	0.69	1-1/8
14-PG	1410-P	7/8	0.69	1-1/4
16-PG	1610-P	1	0.81	1-1/2

Plug For Metric Tube

NANOPURE PART NO.	INTER CHANGES	INCHES		
		TUBE O.D.	A	W HEX
2MO-PG	2MO-P	2	11,9	12,0
3MO-PG	3MO-P	3	11,9	12,0
4MO-PG	4MO-P	4	11,9	12,0
6MO-PG	6MO-P	6	12,7	14,0
8MO-PG	8MO-P	8	13,5	16,0
10MO-PG	10MO-P	10	15,1	19,0
12MO-PG	12MO-P	12	17,5	22,0
14MO-PG	14MO-P	14	17,5	25,0
15MO-PG	15MO-P	15	17,5	25,0
16MO-PG	16MO-P	16	17,5	25,0
18MO-PG	18MO-P	18	17,5	30,0
20MO-PG	20MO-P	20	17,5	32,0
22MO-PG	22MO-P	22	17,5	32,0
25MO-PG	25MO-P	25	20,6	38,0

Cap For Fractional Tube



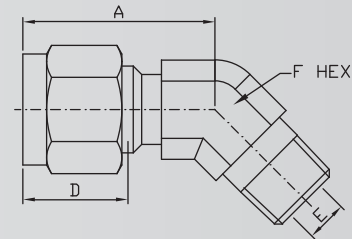
Unit= mm

NANOPURE PART NO.	INTER CHANGES	INCHES			
		TUBE O.D.	A	C	W HEX
2-CP	200-C	1/8	0.79	0.60	7/16
3-CP	300-C	3/16	0.84	0.64	7/16
4-CP	400-C	1/4	0.92	0.70	1/2
5-CP	500-C	5/16	0.96	0.73	9/16
6-CP	600-C	3/8	1.01	0.76	5/8
8-CP	810-C	1/2	1.15	0.87	13/16
10-CP	1010-C	5/8	1.18	0.87	15/16
12-CP	1210-C	3/4	1.25	0.87	1-1/16
14-CP	1410-C	7/8	1.31	0.87	1-3/16
16-CP	1610-C	1	1.52	1.05	1-3/8

Cap For Metric Tube

NANOPURE PART NO.	INTER CHANGES	MILLIMETERS			
		TUBE O.D.	A	C	W HEX
3MO-CP	3MO-C	3	13,5	15,3	12,0
4MO-CP	4MO-C	4	14,3	16,1	12,0
6MO-CP	6MO-C	6	15,9	17,7	14,0
8MO-CP	8MO-C	8	17,1	18,6	15,0
10MO-CP	10MO-C	10	19,1	19,5	18,0
12MO-CP	12MO-C	12	19,1	22,0	22,0
14MO-CP	14MO-C	14	19,8	22,0	24,0
15MO-CP	15MO-C	15	19,8	22,0	24,0
16MO-CP	16MO-C	16	19,8	22,0	24,0
18MO-CP	18MO-C	18	21,3	22,0	27,0
20MO-CP	20MO-C	20	23,9	22,0	30,0
22MO-CP	22MO-C	22	23,9	22,0	30,0
25MO-CP	25MO-C	25	26,2	26,5	35,0

45° Male Elbow



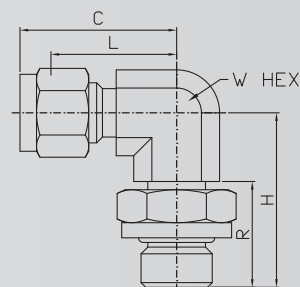
Unit= mm

NANOPURE PART NO.	INTER CHANGES	INCHES						
		TUBE O.D.	NPT THREAD	C	L	P	R	W HEX
2-HME-2	200-5-2	1/8	1/8	0.60	0.53	0.57	0.38	7/16
3-HME-2	300-5-2	3/16	1/8	0.64	0.56	0.58	0.38	7/16
4-HME-2	400-5-2	1/4	1/8	0.70	0.66	0.66	0.38	9/16
4-HME-4	400-5-4	1/4	1/4	0.70	0.66	0.86	0.56	9/16
5-HME-2	500-5-2	5/16	1/8	0.73	0.66	0.66	0.38	9/16
6-HME-2	600-5-2	3/8	1/8	0.76	0.72	0.67	0.38	9/16
6HME-4	600-5-4	3/8	1/4	0.76	0.72	0.86	0.56	9/16
6-HME-6	600-5-6	3/8	3/8	0.76	0.75	0.95	0.56	3/4
8-HME-6	810-5-6	1/2	3/8	0.87	0.75	0.95	0.56	3/4
10-HME-8	1010-5-8	5/8	1/2	0.87	0.84	1.20	0.75	1-1/16
12-HME-12	1210-5-12	3/4	3/4	0.87	0.84	1.20	0.75	1-1/16
14-HME-12	1410-5-8	7/8	3/4	0.87	1.36	1.27	0.75	1-5/16
16-HME-16	1610-5-12	1	1	1.05	1.19	1.14	0.94	1-5/16

NPT Female Connector For Metric tube

NANOPURE PART NO.	INTER CHANGES	MILLIMETERS						
		TUBE O.D.	NPT THREAD	C	L	P	R	W HEX
6MO-HME-2	-	6	1/8	17.7	16.0	16.8	9.5	14.0
6MO-HME-4	-	6	1/4	17.7	16.0	21.8	14.3	14.0
8MO-HME-2	-	8	1/8	18.6	16.8	16.8	9.5	14.0
10MO-HME-4	-	10	1/4	19.5	19.0	24.1	14.3	19.0
12MO-HME-6	-	12	3/8	22.0	19.0	24.1	14.3	19.0
12MO-HME-8	-	12	1/2	22.0	20.6	29.7	19.0	22.0
16MO-HME-8	-	16	1/2	22.0	20.6	29.7	19.0	22.0

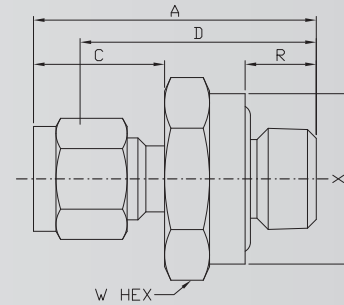
BSPB Male Elbow(Positionable)



Unit= mm

NANOPURE PART NO.	INTER CHANGES	INCHES						
		TUBE O.D.	BSPP THREAD	C	H	L	R	W HEX
4-MEPR-2	400-2-2PR	1/4	1/8-28	1.06	1.04	0.77	0.81	9/16
4-MEPR-4	400-2-4PR	1/4	1/4-19	1.14	1.27	0.85	0.83	9/16
6-MEPR-4	600-2-4PR	3/8	1/4-19	1.20	1.27	0.85	0.83	9/16
6-MEPR-6	600-2-6PR	3/8	3/8-19	1.31	1.46	1.02	0.83	3/4
8-MEPR-4	810-2-4PR	1/2	1/4-19	1.50	1.38	1.10	0.83	7/8
8-MEPR-6	810-2-6PR	1/2	3/8-19	1.50	1.46	1.10	0.85	7/8
8-MEPR-8	810-2-8PR	1/2	1/2-14	1.50	1.71	1.10	1.09	7/8
10-MEPR-8	1010-2-8PR	5/8	1/2-14	1.50	1.81	1.10	1.09	1-1/16
12-MEPR-12	1210-2-8PR	3/4	1/2-14	1.57	1.81	1.17	1.09	1-1/16
12-MEPR-12	1210-2-12PR	3/4	3/4-14	1.57	1.92	1.17	1.20	1-1/16
16-MEPR-12	1610-2-12PR	1	3/4-14	1.93	2.11	1.45	1.20	1-5/16
16-MEPR-16	1610-2-16PR	1	1-11	1.93	2.11	1.45	1.20	1-5/16

Male Connector to O-Ring Straight Thread



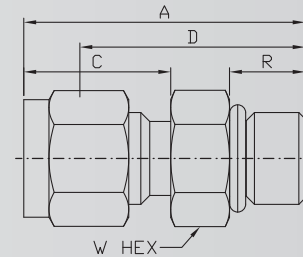
Unit= mm

NANOPURE PART NO.	INTER CHANGES	INCHES								O-Ring NO.
		TUBE O.D.	STRAIGHT THREAD	A	C	D	R	X	W HEX	
1-MCOR	100-1-OR	1/16	5/16-24	1.06	0.43	0.91	0.34	0.55	9/16	
2-MCOR	200-1-OR	1/8	5/16-24	1.29	0.60	1.03	0.34	0.55	9/16	
3-MCOR	300-1-OR	3/16	3/8-24	1.35	0.64	1.09	0.38	0.62	5/8	
4-MCOR	400-1-OR	1/4	7/16-20	1.51	0.70	1.22	0.41	0.74	3/4	
5-MCOR	500-1-OR	5/16	1/2-20	1.61	0.73	1.31	0.44	0.86	7/8	
6-MCOR	600-1-OR	3/8	9/16-18	1.67	0.76	1.38	0.44	0.93	15/16	
8-MCOR	810-1-OR	1/2	3/4-16	1.81	0.87	1.41	0.47	1.12	1-1/8	
10-MCOR	1010-1-OR	5/8	7/8-14	1.90	0.87	1.50	0.47	1.30	1-3/8	
12-MCOR	1210-1-OR	3/4	1-1/16-12	2.06	0.87	1.66	0.56	1.49	1-1/2	
14-MCOR	1410-1-OR	7/8	1-1/16-12	2.06	0.87	1.66	0.56	1.49	1-1/2	
16-MCOR	1610-1-OR	1	1-5/16-12	2.30	1.05	1.81	0.56	1.74	1-3/4	

Male Connector to O-Ring Pipe Thread

NANOPURE PART NO.	INTER CHANGES	INCHES								O-Ring NO.
		TUBE O.D.	NPT THREAD	A	C	D	R	X	W HEX	
1-MCOR-2	100-1-2-OR	1/16	1/8	1.12	0.43	0.97	0.28	0.74	3/4	
2-MCOR-2	200-1-2-OR	1/8	1/8	1.29	0.60	1.03	0.28	0.74	3/4	
2-MCOR-4	200-1-4-OR	1/8	1/4	1.43	0.60	1.17	0.38	0.93	15/16	
3-MCOR-2	300-1-2-OR	3/16	1/8	1.32	0.64	1.06	0.28	0.74	3/4	
3-MCOR-4	300-1-4-OR	3/16	1/4	1.46	0.64	1.20	0.38	0.93	15/16	
4-MCOR-2	400-1-2-OR	1/4	1/8	1.38	0.70	1.09	0.28	0.74	3/4	
4-MCOR-4	400-1-4-OR	1/4	1/4	1.51	0.70	1.22	0.38	0.93	15/16	
4-MCOR-6	400-1-6-OR	1/4	3/8	1.57	0.70	1.28	0.41	1.12	1-1/8	
5-MCOR-2	500-1-2-OR	5/16	1/8	1.43	0.73	1.13	0.28	0.74	3/4	
5-MCOR-4	500-1-4-OR	5/16	1/4	1.46	0.73	1.25	0.38	0.93	15/16	
6-MCOR-2	600-1-2-OR	3/8	1/8	1.45	0.76	1.16	0.28	0.74	3/4	
6-MCOR-4	600-1-4-OR	3/8	1/4	1.57	0.76	1.28	0.38	0.93	15/16	
6-MCOR-6	600-1-6-OR	3/8	3/8	1.63	0.76	1.34	0.41	1.12	1-1/8	
6-MCOR-8	600-1-8-OR	3/8	1/2	1.85	0.76	1.56	0.53	1.30	1-3/8	
8-MCOR-4	810-1-4-OR	1/2	1/4	1.68	0.87	1.28	0.36	0.93	15/16	
8-MCOR-6	810-1-6-OR	1/2	3/8	1.76	0.87	1.36	0.41	1.12	1-1/8	
8-MCOR-8	810-1-8-OR	1/2	1/2	1.98	0.87	1.58	0.53	1.30	1-3/8	
10-MCOR-8	1010-1-8-OR	5/8	1/2	1.86	0.87	1.56	0.53	1.30	1-3/8	
10-MCOR-12	1010-1-12-OR	5/8	3/4	2.06	0.87	1.66	0.56	1.49	1-1/2	
12-MCOR-8	1210-1-8-OR	3/4	1/2	1.98	0.87	1.58	0.53	1.30	1-3/8	
12-MCOR-12	1210-1-12-OR	3/4	3/4	2.06	0.87	1.66	0.56	1.49	1-1/2	
16-MCOR-12	1610-1-12-OR	1	3/4	2.24	1.05	1.75	0.56	1.49	1-1/2	
16-MCOR-16	1610-1-16-OR	1	1	2.40	1.05	1.91	0.66	1.74	1-3/4	

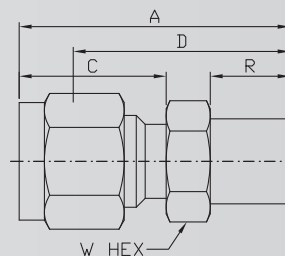
Male Connector To SAE/MS Straight Thread



Unit= mm

NANOPURE PART NO.	INTER CHANGES	INCHES							O-Ring NO.
		TUBE O.D.	STRAIGHT THREAD	A	C	D	R	W HEX	
1-MCST-5	100-1-2ST	1/16	5/16-24	0.92	0.43	0.77	0.30	7/16	
2-MCST-5	200-1-2ST	1/8	5/16-24	1.18	0.60	0.92	0.30	7/16	
2-MCST-9	200-1-6ST	1/8	9/16-18	1.35	0.60	1.06	0.39	11/16	
3-MCST-6	300-1-3ST	3/16	3/8-24	1.20	0.64	0.94	0.30	1/2	
4-MCST-7	400-1-4ST	1/4	7/16-20	1.34	0.70	1.05	0.36	9/16	
4-MCST-9	400-1-6ST	1/4	9/16-18	1.40	0.70	1.11	0.39	11/16	
4-MCST-12	400-1-8ST	1/4	3/4-16	1.48	0.70	1.19	0.44	7/8	
4-MCST-14	400-1-10ST	1/4	7/8-14	1.60	0.70	1.31	0.50	1	
5-MCST-8	500-1-5ST	5/16	1/2-20	1.37	0.73	1.08	0.36	5/8	
6-MCST-7	600-1-4ST	3/8	7/16-20	1.40	0.76	1.11	0.36	5/8	
6-MCST-9	600-1-6ST	3/8	9/16-18	1.46	1.01	1.17	0.39	11/16	
6-MCST-12	600-1-8ST	3/8	3/4-16	1.54	1.01	1.25	0.44	7/8	
6-MCST-14	600-1-10ST	3/8	7/8-14	1.67	1.06	1.38	0.50	1	
8-MCST-9	810-1-6ST	1/2	9/16-18	1.54	1.17	1.14	0.39	7/8	
8-MCST-12	810-1-8ST	1/2	3/4-16	1.65	1.17	1.25	0.44	7/8	
8-MCST-17	810-1-12ST	1/2	1-1/16-12	1.93	1.01	1.53	0.59	1-1/4	
10-MCST-14	1010-1-10ST	5/8	7/8-14	1.78	1.01	1.38	0.50	1	
12-MCST-14	1210-1-10ST	3/4	7/8-14	1.68	1.06	1.28	0.50	1-1/8	
12-MCST-17	1210-1-12ST	3/4	1-1/16-12	1.93	1.17	1.53	0.59	1-1/4	
14-MCST-19	1410-1-14ST	7/8	1-3/16-12	1.93	1.17	1.53	0.59	1-3/8	
16-MCST-13	1610-1-12ST	1	1-1/16-12	2.12	1.23	1.63	0.59	1-3/8	
16-MCST-21	1610-1-16ST	1	1-5/16-12	2.15	1.42	1.66	0.59	1-1/2	
20-MCST-26	2010-1-20ST	1-1/4	1-5/8-12	2.59	1.42	1.82	0.59	1-7/8	
24-MCST-30	2410-1-24ST	1-1/2	1-7/8-12	3.05	1.53	1.99	0.59	2-1/8	
32-MCST-40	3210-1-32ST	2	2-1/2-12	4.00	1.53	2.53	0.59	2-3/4	

Male Pipe Weld



Unit= mm

NANOPURE PART NO.	INTER CHANGES	INCHES							
		TUBE O.D.	BUTTWELD SIZE	A	C	D	R	X	W HEX
2-MCW-2	200-1-2W	1/8	1/8	1.20	0.60	0.94	0.38	0.405	7/16
3-MCW-2	300-1-2W	3/16	1/8	1.24	0.61	0.97	0.38	0.405	7/16
4-MCW-2	400-1-2W	1/4	1/8	1.29	0.66	1.00	0.38	0.405	1/2
4-MCW-4	400-1-4W	1/4	1/4	1.46	0.66	1.17	0.56	0.540	9/16
5-MCW-2	500-1-2W	5/16	1/8	1.48	0.73	1.22	0.38	0.405	1/2
5-MCW-4	500-1-4W	5/16	1/4	1.49	0.73	1.23	0.56	0.540	9/16
6-MCW-4	600-1-4W	3/8	1/4	1.49	0.70	1.20	0.56	0.540	9/16
6-MCW-6	600-1-6W	3/8	3/8	1.60	0.70	1.31	0.56	0.675	3/4
6-MCW-8	600-1-8W	3/8	1/2	1.82	0.70	1.53	0.75	0.840	7/8
6-MCW-12	600-1-12W	3/8	3/4	1.88	0.70	1.59	0.75	1.050	1-1/8
8-MCW-6	810-1-6W	1/2	3/8	1.71	0.84	1.31	0.56	0.675	13/16
8-MCW-8	810-1-8W	1/2	1/2	1.90	0.84	1.50	0.75	0.840	7/8
8-MCW-12	810-1-12W	1/2	3/4	1.96	0.84	1.56	0.75	1.050	1-1/16
10-MCW-8	1010-1-8W	5/8	1/2	1.93	0.87	1.53	0.75	0.840	15/16
12-MCW-12	1210-1-12W	3/4	3/4	1.99	0.87	1.59	0.75	1.050	7/8
16-MCW-16	1610-1-16W	1	1	2.46	0.96	1.97	0.94	1.310	1-1/16



Stock Code 300260

Lion Hygienic Materials Co., Ltd

No.22 Lufeng west road, Kunshan,
Jiangsu, P. R. China

Tel: 86-512-5767 1815

Fax: 86-512-5787 1472

Email: info@kinglai.com.tw

www.kl-nanopure.com



經銷商

南宜國際材料有限公司

■ 總公司 TEL: 03-560-1270

新竹縣竹北市台元科技園區台元一街8號6樓之1

■ 台中 TEL: 03-560-1270 ■ 台南 TEL: 06-599-2080

✉ service@cemabearing.com

🌐 www.sinmat.com.tw

昆山南宜喜瑪商貿有限公司

■ TEL: 86-512-5527-6656

✉ service@cemabearing.com.cn

🌐 www.cematechnology.com

